



Edmonton Alberta

\$190,000

This charming two-story townhouse in the family-friendly neighborhood of Hairsine offers a perfect blend of comfort and convenience with 1,039.08 square feet of well-designed living space. Featuring three comfortable bedrooms and one and a half baths, it offers plenty of room for families or couples. The unfinished basement provides a blank canvas for additional living space or storage. The fully fenced backyard ensures privacy and a safe outdoor space for kids and pets. Ideally situated near schools, parks, shopping centers, and the scenic River Valley, this home offers both tranquility and convenience for its future owners. (id:6769)

Living room 12'2" x 16'

Dining room 9'1" x 8'10"

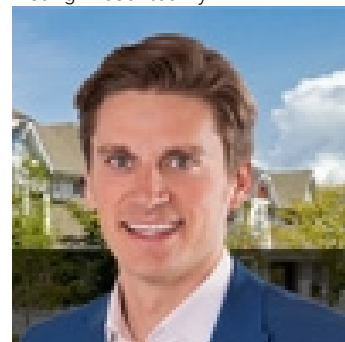
Kitchen 8'7" x 9'7"

Primary Bedroom Measurements not available x 13 m

Bedroom 2 9'7" x 11'5"

Bedroom 3 9'3" x 11'3"

Listing Presented By:



Originally Listed by:
RE/MAX Elite



CREA

DDF

#230, 70 Mcleod Ave , Spruce Grove, AB,

Phone: 780-920-0550
tyson@royallepage.ca

The property information on this website is derived from the Canadian Real Estate Association's Data Distribution Facility (DDF®). DDF® references real estate listings held by various brokerage firms and franchisees. The accuracy of information is not guaranteed and should be independently verified. The trademarks REALTOR®, REALTORS® and the REALTOR® logo are controlled by The Canadian Real Estate Association (CREA) and identify real estate professionals who are members of CREA. The trademarks MLS®, Multiple Listing Service® and the associated logos are owned by CREA and identify the quality of services provided by real estate professionals who are members of CREA.