



## Edmonton Alberta

\$614,900

Step into your dream home, ready for you in February 2024, built by Excel Homes! You'll fall in love with the stunning MELROSE from the moment you walk in. The open-concept layout is bathed in natural light thanks to upgraded oversized windows and an enhanced lighting package. The upgraded kitchen is a true showstopper, featuring quartz countertops, full-height soft-close cabinets, an extended island, and sleek stainless steel appliances. Upstairs, the spacious bedrooms and a cozy bonus room provide plenty of space for everyone. Plus the walk-in laundry room adds convenience. Need extra flexibility? The main floor offers a bedroom and full bath! Separate side entrance for a future suite for rental income, extended living or a private workspace. Oversized garage for vehicles, tools, and toys. Located in a vibrant, family-friendly neighborhood steps away from parks, walking trails, schools amenities. Plus, commuters will appreciate the easy access to major routes, make daily driving a breeze! (id:6769)

Living room Measurements not available

Dining room Measurements not available

Kitchen Measurements not available

Bedroom 4 Measurements not available

Pantry Measurements not available

Primary Bedroom Measurements not available

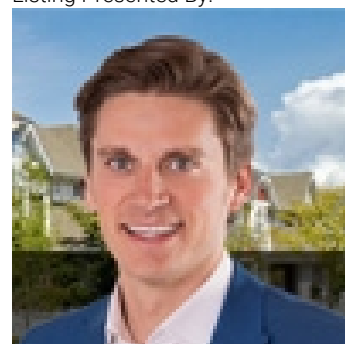
Bedroom 2 Measurements not available

Bedroom 3 Measurements not available

Bonus Room Measurements not available

Laundry room Measurements not available

Listing Presented By:



Originally Listed by:  
RE/MAX Elite

<http://www.jolenelangelo.com/>



CREA

DDF

#230, 70 Mcleod Ave , Spruce  
Grove, AB,

Phone: 780-920-0550  
tyson@royallepage.ca

The property information on this website is derived from the Canadian Real Estate Association's Data Distribution Facility (DDF®). DDF® references real estate listings held by various brokerage firms and franchisees. The accuracy of information is not guaranteed and should be independently verified. The trademarks REALTOR®, REALTORS® and the REALTOR® logo are controlled by The Canadian Real Estate Association (CREA) and identify real estate professionals who are members of CREA. The trademarks MLS®, Multiple Listing Service® and the associated logos are owned by CREA and identify the quality of services provided by real estate professionals who are members of CREA.