



Edmonton Alberta

\$629,999

PRISTINE WALKOUT 2-STOREY BACKING ONTO TRAILS AND A POND! GLEAMING and SPOTLESS this BEDROCK-built home is as beautiful as the day the original owner got the key! Thick granite countertops throughout this 3 bed/2.5 bath family home complete with BONUS room and MAIN FLOOR DEN. Maple hardwood flooring with matching 41 maple cabinetry comes w/ under cabinet lighting & deep pantry. The primary bedroom is flooded with natural light, a large W/I closet & an ensuite with a soaker tub, dble sink and a 60 shower. Enjoy extra high 9' ceilings in an unspoiled walkout basement. Natural beauty trails directly behind the house and watch the geese land on the pond from a pressure treated 11 X 12 deck. Kitchen Aid S/S appliances and Whirlpool duet washer/dryer with steam & sensor dryer. SOUTHEAST facing backyard shows off stunning sunrises with added bonus of full light all day long in the kitchen/LR area. QUIET street close to a playground, community garden, skating & ALL amenities. Short drive to the airport. (id:6769)

Living room 4.16 m X 4.28 m

Dining room 3.04 m X 2.57 m

Kitchen 4.65 m X 4.82 m

Den 3.66 m X 3.08 m

Bedroom 3 3.04 m X 4.88 m

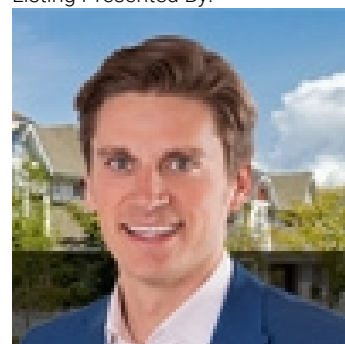
Laundry room 3.25 m X 2.65 m

Primary Bedroom 3.4 m X 5.32 m

Bedroom 2 3.79 m X 3.02 m

Bonus Room 6.09 m X 3.81 m

Listing Presented By:



Originally Listed by:
RE/MAX Elite

<http://wendyandwilson.com/>



CREA

DDF

#230, 70 Mcleod Ave , Spruce Grove, AB,

Phone: 780-920-0550
tyson@royallepage.ca

The property information on this website is derived from the Canadian Real Estate Association's Data Distribution Facility (DDF®). DDF® references real estate listings held by various brokerage firms and franchisees. The accuracy of information is not guaranteed and should be independently verified. The trademarks REALTOR®, REALTORS® and the REALTOR® logo are controlled by The Canadian Real Estate Association (CREA) and identify real estate professionals who are members of CREA. The trademarks MLS®, Multiple Listing Service® and the associated logos are owned by CREA and identify the quality of services provided by real estate professionals who are members of CREA.