



Edmonton Alberta

\$840,000

Discover this stunning home in the most sought-after neighbourhood of Orchards at Ellerslie. Situated in a quiet culdesac, this property boasts breathtaking pond-backing views from balconies on the main floor and as well as from outside the master bedroom. The main floor has spacious living room, modern kitchen with huge countertop, dining area with access to balcony to savor the picturesque pond views while enjoying with family and friends. The upper floor has master bed with ensuite bath, a large walk-in closet and a balcony along with two other sizeable bedrooms, a full bath, laundry and huge bonus room. The walk-out finished basement offers a full bath, bedroom plus a recreation room, perfect for relaxation or entertaining, with access to huge landscaped backyard and serene pond with walking trail. Enjoy easy access to Anthony Henday, QE2, and the airport, making commuting a breeze. This home combines luxury, convenience, and natural beauty--don't miss your chance to call it yours! (id:6769)

Family room 5.78 m X 5.9 m

Bedroom 4 4.27 m X 2.92 m

Recreation room 7.79 m X 4.79 m

Living room 4.33 m X 4.73 m

Dining room 4.03 m X 2.83 m

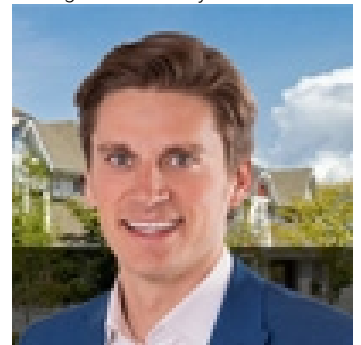
Kitchen 4.03 m X 4.93 m

Primary Bedroom 3.97 m X 4.76 m

Bedroom 2 2.97 m X 4.81 m

Bedroom 3 3.07 m X 5.3 m

Listing Presented By:



Originally Listed by:
RE/MAX Elite



Royal

Le Page Noralta Spruce Grove

#230, 70 Mcleod Ave , Spruce Grove, AB,

Phone: 780-920-0550

Fax:

tyson@royalpage.ca

The property information on this website is derived from the Canadian Real Estate Association's Data Distribution Facility (DDF®). DDF® references real estate listings held by various brokerage firms and franchisees. The accuracy of information is not guaranteed and should be independently verified. The trademarks REALTOR®, REALTORS® and the REALTOR® logo are controlled by The Canadian Real Estate Association (CREA) and identify real estate professionals who are members of CREA. The trademarks MLS®, Multiple Listing Service® and the associated logos are owned by CREA and identify the quality of services provided by real estate professionals who are members of CREA.