



Edmonton Alberta

\$599,800

Luxurious two storey in fabulous Tamarack location! Just a few homes away from the Tamarack Playground and the K-9 A. Blair Mcpherson School- this is the ideal family home. Spacious front foyer next to office (or main floor bedroom). Wide plank flooring accents the show stopper great room with 16 foot ceilings and corner stone fireplace. The kitchen features a large angled island with stone sit up countertop. There is ample cabinet space and a gas stove for the executive chef! A spacious eating area overlooks the west facing backyard complete with hot tub and maintenance-free deck. The upper level features 3 bedrooms including the primary bedroom with spa-like 5 pce ensuite with dual sinks, glass shower, soaker tub and walk-in closet. The basement is fully finished with large rec. room, bedroom, 3pce bath and sizable storage room. Professionally painted throughout the home. Oversized garage. The Meadows Rec. Center is nearby. Excellent access to all commuter routes. Enjoy beautiful Tamarack! (id:6769)

Bedroom 5 3.7 m X 3.6 m

Recreation room 7.8 m X 5.7 m

Storage 5.1 m X 5.3 m

Living room 4.6 m X 4.4 m

Dining room 3.8 m X 3.7 m

Kitchen 3.8 m X 3.7 m

Bedroom 4 3.9 m X 3 m

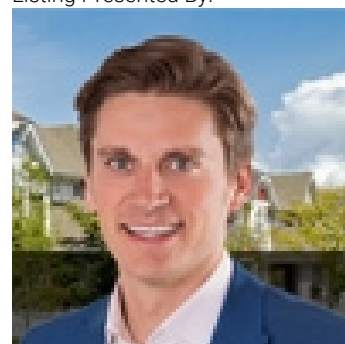
Laundry room 2.8 m X 2.1 m

Primary Bedroom 5 m X 3.8 m

Bedroom 2 3.8 m X 3.1 m

Bedroom 3 3 m X 3 m

Listing Presented By:



Originally Listed by:
RE/MAX Elite

<http://www.calldale4asale.com/>



CREA

DDF

#230, 70 Mcleod Ave , Spruce
Grove, AB,

Phone: 780-920-0550
tyson@royallepage.ca

The property information on this website is derived from the Canadian Real Estate Association's Data Distribution Facility (DDF®). DDF® references real estate listings held by various brokerage firms and franchisees. The accuracy of information is not guaranteed and should be independently verified. The trademarks REALTOR®, REALTORS® and the REALTOR® logo are controlled by The Canadian Real Estate Association (CREA) and identify real estate professionals who are members of CREA. The trademarks MLS®, Multiple Listing Service® and the associated logos are owned by CREA and identify the quality of services provided by real estate professionals who are members of CREA.