



Edmonton Alberta

\$629,600

Wow! Stunning Award Winning Coventry 2 sty nestled in a quiet cul de sac backing to a beautiful treed area- perfect for the growing family. Huge SE facing 7500 sf lot for those who love to entertain outdoors. BBQ on the deck, enjoy the gazebo, watch the kids kick the ball or play fetch w/your dog. Inside, you'll be wowed by the spectacular soaring 18' ceilings & wall of windows in the spacious Great rm. 2247 sf of luxury finishings incl 9' ceilings, custom window coverings & extensive use of hardwood in this open concept plan. Main flr den/flex rm, gorgeous Chefs kitchen w/granite, S/S appliances, island & convenient walk thru pantry. 3 bedrms upstairs, 2.5 bathrms ttl, laundry rm w/drain & a BONUS rm w/a tranquil view of the beautiful TREED area. Spacious primary bedrm will fit most furniture arrangements & with W/I closet & spa like 5 pc ensuite. Lower level is unspoiled ready for your personal touches. O/S garage approx 21x21. Close to shopping, restaurants, Meadows Rec Centre & quick access to the Fwy (id:6769)

Living room 3.88 m X 4.47 m

Dining room 4 m X 2 m

Kitchen 3.79 m X 3.08 m

Den 2.9 m X 2.33 m

Primary Bedroom 4 m X 3.84 m

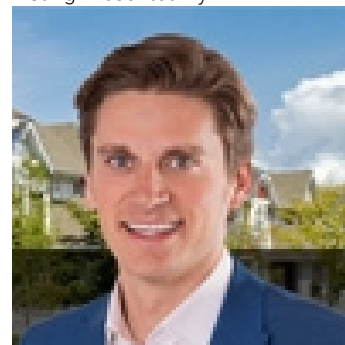
Bedroom 2 3 m X 3.44 m

Bedroom 3 3.09 m X 2.89 m

Bonus Room 4.21 m X 3.62 m

Laundry room Measurements not available

Listing Presented By:



Originally Listed by:
RE/MAX Elite

<http://www.alangee.com/>



CREA

DDF

#230, 70 Mcleod Ave , Spruce
Grove, AB,

Phone: 780-920-0550
tyson@royallepage.ca

The property information on this website is derived from the Canadian Real Estate Association's Data Distribution Facility (DDF®). DDF® references real estate listings held by various brokerage firms and franchisees. The accuracy of information is not guaranteed and should be independently verified. The trademarks REALTOR®, REALTORS® and the REALTOR® logo are controlled by The Canadian Real Estate Association (CREA) and identify real estate professionals who are members of CREA. The trademarks MLS®, Multiple Listing Service® and the associated logos are owned by CREA and identify the quality of services provided by real estate professionals who are members of CREA.