



Edmonton Alberta

\$849,900

Discover the epitome of luxury living in this exquisite two-story home nestled in the heart of Chapelle. Boasting a rare heated triple car garage, this residence offers both style and functionality. The main floor welcomes you with a den and a full bath, designed with an open-concept layout centered around a stunning kitchen featuring a spacious island, perfect for culinary adventures and entertaining guests. Upstairs, unwind in the cozy bonus room or retreat to the master bedroom with its en suite, complemented by two additional washrooms for added convenience. Spanning over 2765 sq. ft., this property offers ample space for comfortable living. Furthermore, the fully finished basement with a separate entrance provides endless possibilities. With its proximity to esteemed schools and bustling shopping destinations, this residence epitomizes refined suburban living. Experience luxury living at its finest in this Chapelle gem! (id:6769)

Bedroom 5 4.5 m X 3.02 m

Bedroom 6 3.02 m X 4.72 m

Second Kitchen 3.18 m X 2.62 m

Living room 5.13 m X 4.62 m

Dining room 2.41 m X 3.33 m

Kitchen 4.32 m X 3.3 m

Den 3.4 m X 3.02 m

Primary Bedroom 4.24 m X 5.16 m

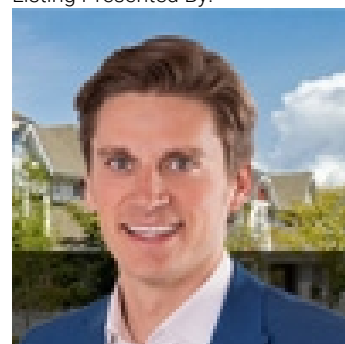
Bedroom 2 3.3 m X 3 m

Bedroom 3 3.76 m X 4.52 m

Bedroom 4 4.37 m X 3.12 m

Bonus Room 4.22 m X 3.86 m

Listing Presented By:



Originally Listed by:
RE/MAX Elite



CREA

DDF

#230, 70 Mcleod Ave , Spruce
Grove, AB,

Phone: 780-920-0550
tyson@royallepage.ca

The property information on this website is derived from the Canadian Real Estate Association's Data Distribution Facility (DDF®). DDF® references real estate listings held by various brokerage firms and franchisees. The accuracy of information is not guaranteed and should be independently verified. The trademarks REALTOR®, REALTORS® and the REALTOR® logo are controlled by The Canadian Real Estate Association (CREA) and identify real estate professionals who are members of CREA. The trademarks MLS®, Multiple Listing Service® and the associated logos are owned by CREA and identify the quality of services provided by real estate professionals who are members of CREA.