



Rural Parkland County Alberta

\$979,900

Indulge in the ultimate lakeside lifestyle with this spectacular home nestled within the gated community of Betula Beach. With 2,128 sq ft of total living space, .44 acres of land and 70 feet of lakefront, this property offers a rare opportunity to own a piece of paradise. You'll be captivated by the grandeur of the window-filled A-frame living area and the inviting warmth of the cedar construction. The kitchen has been beautifully renovated with quartz countertops, under cabinet lighting and S/S appliances. The Large primary bdrm with elegant tall ceilings faces the lake with a convenient private balcony. An updated 5-pc bath, a second bdrm and an upper loft area can also be found on this level. The fully developed walkout basement offers two more bdrms, a 4 pc bath and a spacious rec room, providing plenty of space for family and guests to relax. Outside, the sprawling deck provides the ideal spot to soak up the sunshine and take in the breathtaking scenery surrounded by meticulously landscaped grounds. (id:6769)

Bedroom 3 3.51 m X 3 m

Bedroom 4 3.29 m X 2.73 m

Living room 4.84 m X 4.25 m

Dining room 4 m X 3.52 m

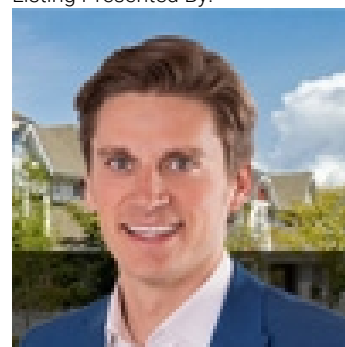
Kitchen 4.87 m X 3.41 m

Primary Bedroom 3.99 m X 3.45 m

Bedroom 2 3.25 m X 3.23 m

Loft 4.92 m X 4.33 m

Listing Presented By:



Originally Listed by:
RE/MAX Elite

<http://www.marceltessier.com/>



Royal

Le Page Noralta Spruce Grove

#230, 70 Mcleod Ave , Spruce Grove, AB,

Phone: 780-920-0550

Fax:

tyson@royalpage.ca

The property information on this website is derived from the Canadian Real Estate Association's Data Distribution Facility (DDF®). DDF® references real estate listings held by various brokerage firms and franchisees. The accuracy of information is not guaranteed and should be independently verified. The trademarks REALTOR®, REALTORS® and the REALTOR® logo are controlled by The Canadian Real Estate Association (CREA) and identify real estate professionals who are members of CREA. The trademarks MLS®, Multiple Listing Service® and the associated logos are owned by CREA and identify the quality of services provided by real estate professionals who are members of CREA.