



Spruce Grove Alberta

\$529,900

Getting in and out of the community is a breeze, thanks to its ideal location. Located near Edmonton also means McLaughlin Heights is a short drive from world-class shopping and dining. McLaughlin Heights is just ten minutes west of Edmonton in the growing city of Spruce Grove. So whether you go there to work or to play, Edmonton is never far away! This single-family home features a double car garage, 3 bedrooms, 2.5 bathrooms and chrome faucets throughout. Enjoy extra living space on the main floor with the laundry room on the second floor. The 9-foot ceilings and quartz countertops throughout blends style and functionality for your family to build endless memories. (id:6769)

Living room Measurements not available

Dining room Measurements not available

Kitchen Measurements not available

Den Measurements not available

Primary Bedroom Measurements not available

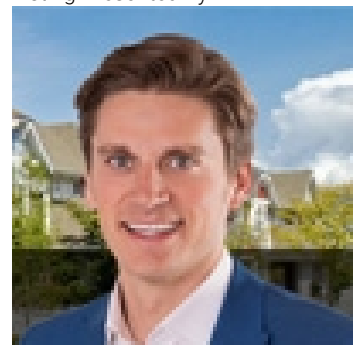
Bedroom 2 Measurements not available

Bedroom 3 Measurements not available

Bonus Room Measurements not available

Laundry room Measurements not available

Listing Presented By:



Originally Listed by:
Century 21 All Stars Realty Ltd

<http://www.michaelsells.ca/>



CREA

DDF

#230, 70 Mcleod Ave , Spruce
Grove, AB,

Phone: 780-920-0550
tyson@royallepage.ca

The property information on this website is derived from the Canadian Real Estate Association's Data Distribution Facility (DDF®). DDF® references real estate listings held by various brokerage firms and franchisees. The accuracy of information is not guaranteed and should be independently verified. The trademarks REALTOR®, REALTORS® and the REALTOR® logo are controlled by The Canadian Real Estate Association (CREA) and identify real estate professionals who are members of CREA. The trademarks MLS®, Multiple Listing Service® and the associated logos are owned by CREA and identify the quality of services provided by real estate professionals who are members of CREA.