



## Edmonton Alberta

\$219,000

Corner Unit located on the Top Floor with city view. Bright and clean. 2 bedrooms plus den. Sunny living room with lots of windows and patio door to balcony with NW exposure. Open kitchen with wood cabinets and granite countertops and central island. 2 full bath. Primary bedroom with walk thru closet and 3 pcs ensuite w/shower. Another bedroom just steps to the full bath. Insuite laundry. Purchase price including all appliances and one titled and heated underground parking. Pets allowed upon board approval. Condo fee including heat, water, professional management, parking, exterior maintenance, snow removal and insurance. Great location. Close to schools, bus, shopping with easy access to Anthony Henday freeway. Ideal starter home or holding property. (id:6769)

Living room 3.38 m X 3.55 m

Dining room 2.64 m X 3 m

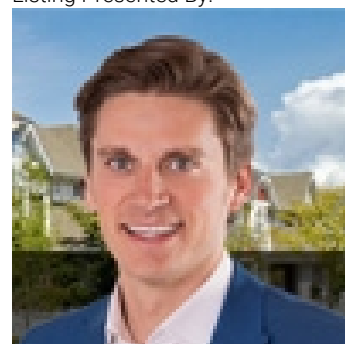
Kitchen 2.47 m X 3.86 m

Den 3.3 m X 2.13 m

Primary Bedroom 3.27 m X 3.35 m

Bedroom 2 3.08 m X 3.1 m

Listing Presented By:



Originally Listed by:  
RE/MAX Elite

<http://www.stephenyip.com/>



**Royal**

**Le Page Noralta Spruce Grove**

#230, 70 Mcleod Ave , Spruce  
Grove, AB,

Phone: 780-920-0550

Fax:

[tyson@royallepage.ca](mailto:tyson@royallepage.ca)

The property information on this website is derived from the Canadian Real Estate Association's Data Distribution Facility (DDF®). DDF® references real estate listings held by various brokerage firms and franchisees. The accuracy of information is not guaranteed and should be independently verified. The trademarks REALTOR®, REALTORS® and the REALTOR® logo are controlled by The Canadian Real Estate Association (CREA) and identify real estate professionals who are members of CREA. The trademarks MLS®, Multiple Listing Service® and the associated logos are owned by CREA and identify the quality of services provided by real estate professionals who are members of CREA.