

Fort Saskatchewan Alberta

\$62,500

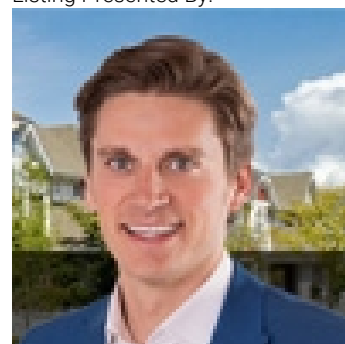
TOP FLOOR Studio Unit with Immediate Possession available. This unit is located in Phase 1 of the Gardens. Current Condo fee includes - Heat - Cable TV - Water/ Sewer - Parking with power to stall - Snow and Lawn care for facility. Condo fee is \$484.81 Pet friendly complex with Board approval (14 at shoulder). Many amenities and social activities available to residences of this complex. Main building features 2 Guest Suites : Safety Emergency alert system, Large cafeteria , numerous sitting areas, Games areas , craft rooms, hair salon, Chapel and so much more. Great place to call home in this Age in Place environment. Complex located on Public Transit route. (id:6769)

Living room 3.6 m X 3.3 m

Primary Bedroom none

Kitchen 2.24 m X 1.6 m

Listing Presented By:



Originally Listed by:
Royal LePage Noralta Real Estate

<http://www.sharpehomes.ca/>



Royal

Le Page Noralta Spruce Grove

#230, 70 Mcleod Ave , Spruce Grove, AB,

Phone: 780-920-0550

Fax:

tyson@royalpage.ca

The property information on this website is derived from the Canadian Real Estate Association's Data Distribution Facility (DDF®). DDF® references real estate listings held by various brokerage firms and franchisees. The accuracy of information is not guaranteed and should be independently verified. The trademarks REALTOR®, REALTORS® and the REALTOR® logo are controlled by The Canadian Real Estate Association (CREA) and identify real estate professionals who are members of CREA. The trademarks MLS®, Multiple Listing Service® and the associated logos are owned by CREA and identify the quality of services provided by real estate professionals who are members of CREA.