

Edmonton Alberta

\$184,900

Don't miss the opportunity to own this rare top floor corner unit w/ titled underground parking in a well-managed 55+ complex! This lovely 2 bedroom, 2 bathroom condo in Beulah Manor is ideal with its large, bright kitchen, in-suite storage and huge wraparound covered balcony! You will find a newer refrigerator and electric stove in the spacious kitchen and new stackable washer/dryer in the convenient in-suite laundry room. The condo features a large living room with newer carper, dining area and Primary bedroom with its own 3 piece ensuite, plus a second bedroom next to a 3 piece bath. There is a secure heated underground Parking stall, with a storage locker in front of it. The complex also features a Social/Party room and exterior space for your enjoyment. Located close to parks, shopping, restaurants, walking trails, a Lake and the West End Seniors Activity Centre. The complex is pet friendly, with Board approval. This is more than a condo; it's a new, beautiful lifestyle! (id:6769)

Living room 5.47 m X 6.34 m

Dining room 2.39 m X 2.04 m

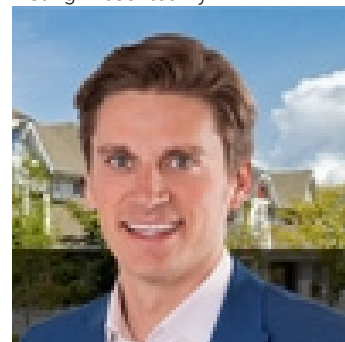
Kitchen 4.97 m X 2.26 m

Primary Bedroom 3.09 m X 4.31 m

Bedroom 2 3.58 m X 3.06 m

Laundry room 2.25 m X 1.92 m

Listing Presented By:



Originally Listed by:
RE/MAX Elite

<http://www.gabriellamakar.com/>



CREA

DDF

#230, 70 Mcleod Ave , Spruce
Grove, AB,

Phone: 780-920-0550
tyson@royallepage.ca

The property information on this website is derived from the Canadian Real Estate Association's Data Distribution Facility (DDF®). DDF® references real estate listings held by various brokerage firms and franchisees. The accuracy of information is not guaranteed and should be independently verified. The trademarks REALTOR®, REALTORS® and the REALTOR® logo are controlled by The Canadian Real Estate Association (CREA) and identify real estate professionals who are members of CREA. The trademarks MLS®, Multiple Listing Service® and the associated logos are owned by CREA and identify the quality of services provided by real estate professionals who are members of CREA.