



Edmonton Alberta

\$179,900

Welcome to life at The Ion in Ambleside, one of Southwest Edmonton's most loved condo buildings, surrounded by parks, trails and the shops, restaurants, and everyday conveniences of Windermere. This original-owner, top-floor unit offers sunny west-facing views & a bright, welcoming feel. Fresh paint and brand-new laminate flooring with acoustic underlay throughout - including the bedroom (with condo approval), provides improved sound insulation and a fresh, modern, cohesive look. The open layout features 9-foot ceilings, a spacious kitchen with brand-new dishwasher, a built-in desk ideal for work-from-home days, bedroom with walk-in closet, and a laundry room with extra storage plus a new Electrolux washer & dryer. Enjoy beautiful views and evening sunsets from the west-facing patio, along with the added convenience of underground heated parking and a separate storage unit. Perfect as a first home, a smart downsize, or an investment opportunity in a building that continues to be a favourite! (id:6769)

Living room 3.28 m X 3.17 m

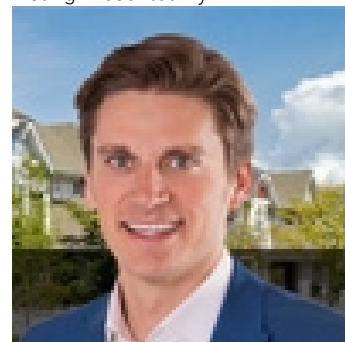
Kitchen 3.28 m X 2.7 m

Primary Bedroom 2.97 m X 3.4 m

Laundry room Measurements not available

Office Measurements not available

Listing Presented By:



Originally Listed by:
RE/MAX Elite

<http://www.jolenelangelo.com/>



**Royal
Le Page Noralta Spruce Grove**

#230, 70 Mcleod Ave , Spruce
Grove, AB,

Phone: 780-920-0550
Fax:
tyson@royallepage.ca

The property information on this website is derived from the Canadian Real Estate Association's Data Distribution Facility (DDF®). DDF® references real estate listings held by various brokerage firms and franchisees. The accuracy of information is not guaranteed and should be independently verified. The trademarks REALTOR®, REALTORS® and the REALTOR® logo are controlled by The Canadian Real Estate Association (CREA) and identify real estate professionals who are members of CREA. The trademarks MLS®, Multiple Listing Service® and the associated logos are owned by CREA and identify the quality of services provided by real estate professionals who are members of CREA.