



Fort Saskatchewan Alberta

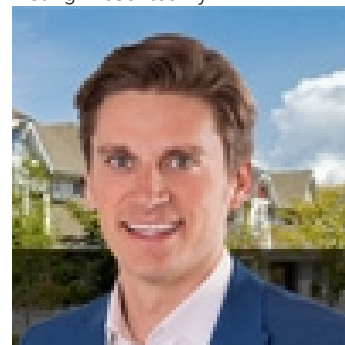
\$194,900

Welcome to Fort Gardens, located in the community of Westpark! This 952sf TOP FLOOR unit has a beautiful sunset view that you can only get from this high up! The home has been well maintained and has been freshly painted. The floor plan is very open concept making the place feel much larger. Walk in, and you are greeted by a large foyer with double closets for plenty of storage. Adjacent is the in-suite laundry room with even more storage space, and 4 piece guest bath. The kitchen is very functional with plenty of counter space, solid oak cabinets and a newer fridge. There is even a separate dining space! The primary bedroom has a walk through closet, and attached 3 piece ensuite. The secondary bedroom is spacious, and both bedrooms flank the living room. This would be a great property for investors or first time home owners. Fort Gardens is walking distance to grocery, restaurants and other great shopping. In addition, very easy access to highway 21 to get in and out of town quickly. Welcome home. (id:6769)

Primary Bedroom Measurements not available

Bedroom 2 Measurements not available

Listing Presented By:



Originally Listed by:
Royal LePage Noralta Real Estate

<http://www.darcyjoubert.com/>



CREA

DDF

#230, 70 Mcleod Ave , Spruce
Grove, AB,

Phone: 780-920-0550
tyson@royallepage.ca

The property information on this website is derived from the Canadian Real Estate Association's Data Distribution Facility (DDF®). DDF® references real estate listings held by various brokerage firms and franchisees. The accuracy of information is not guaranteed and should be independently verified. The trademarks REALTOR®, REALTORS® and the REALTOR® logo are controlled by The Canadian Real Estate Association (CREA) and identify real estate professionals who are members of CREA. The trademarks MLS®, Multiple Listing Service® and the associated logos are owned by CREA and identify the quality of services provided by real estate professionals who are members of CREA.