



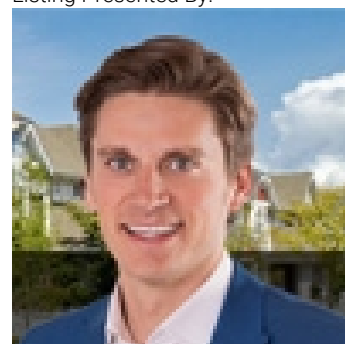
## Stony Plain Alberta

\$145,000

Westerra Manor is located in the heart of Stony Plain and offers the ultimate in condominium living. Condo amenities include: heated underground parking stall, secure storage unit, car wash bay, intercom security, spacious 2 story lobby & a communal amenity area for larger gatherings. This spacious 1 bed/1 bath suite is situated on the TOP floor & boasts an open concept design w/a bright white peninsula kitchen design w/pantry & appliances; living room w/corner electric fireplace; a good size bedroom w/walk in closet; full bath plus in-suite laundry. SOUTH facing patio doors off living room open to a spacious covered balcony with a view. Westerra Manors prime location offers direct access to Stony Plains amazing walking trail system, is close to the Stony Plain Golf course, and only minutes from the many downtown amenities Stony Plain has to offer including: restaurants, shopping, schools, playgrounds, & recreational facilities. (id:6769)

Primary Bedroom Measurements not available

Listing Presented By:



Originally Listed by:  
Royal LePage Noralta Real Estate

<https://tysonmoroz.com/>



CREA

DDF

#230, 70 Mcleod Ave , Spruce Grove, AB,

Phone: 780-920-0550  
[tyson@royallepage.ca](mailto:tyson@royallepage.ca)

The property information on this website is derived from the Canadian Real Estate Association's Data Distribution Facility (DDF®). DDF® references real estate listings held by various brokerage firms and franchisees. The accuracy of information is not guaranteed and should be independently verified. The trademarks REALTOR®, REALTORS® and the REALTOR® logo are controlled by The Canadian Real Estate Association (CREA) and identify real estate professionals who are members of CREA. The trademarks MLS®, Multiple Listing Service® and the associated logos are owned by CREA and identify the quality of services provided by real estate professionals who are members of CREA.