

## Edmonton Alberta

\$189,900

TOP FLOOR CONDO with PARK/RAVINE VIEWS! You are going to be impressed with this beautiful ONE BEDROOM condo in Crossroads at Rutherford. 2017 build, 9' ceilings, extended cabinets to ceiling, Luxury Vinyl Plank flooring throughout, Quartz Countertops, SS Appliances, Huge 15'9x 9'8 Master Bedroom with Large walk in closet and a private balcony with views! The efficient layout grants this unit with LOW CONDO FEES. This building comes with a car wash and TITLED HEATED UNDERGROUND PARKING STALL with STORAGE CAGE. Located close to many amenities, grocery stores and shops. Whether you are a first time buyer, investor or downsizer, this property has something for everyone! (id:6769)

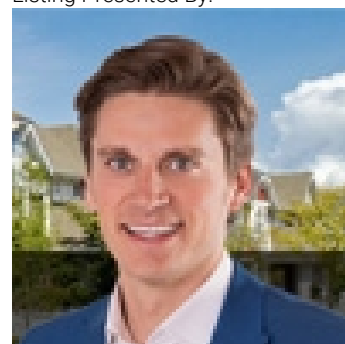
Living room 3.53 m X 3.18 m

Dining room 165 m X 3.64 m

Kitchen 2.49 m X 3.64 m

Primary Bedroom 4.81 m X 2.95 m

Listing Presented By:



Originally Listed by:  
RE/MAX Elite



**Royal**

**Le Page Noralta Spruce Grove**

#230, 70 Mcleod Ave , Spruce Grove, AB,

Phone: 780-920-0550

Fax:

tyson@royalpage.ca

The property information on this website is derived from the Canadian Real Estate Association's Data Distribution Facility (DDF®). DDF® references real estate listings held by various brokerage firms and franchisees. The accuracy of information is not guaranteed and should be independently verified. The trademarks REALTOR®, REALTORS® and the REALTOR® logo are controlled by The Canadian Real Estate Association (CREA) and identify real estate professionals who are members of CREA. The trademarks MLS®, Multiple Listing Service® and the associated logos are owned by CREA and identify the quality of services provided by real estate professionals who are members of CREA.