



## Edmonton Alberta

\$178,800

Welcome to the Crossroads of Rutherford! This stunning 1 Bed + Den ( easily converted to 2nd Bedroom ) TOP FLOOR Suite is everything you have been looking for in your next condo! The Crossroads building is PET FRIENDLY, safe and secure, comes with car wash station in the parkade, located in a family friendly and active community next to a beautiful field + k-9 school, walking distance to public transportation options and every amenity you could want in Heritage Valley! With tall 9' Ceilings only found on the main and top floors, + gorgeous west facing windows, this suite feels spacious, bright, and happy! The kitchen is stunning , quartz countertops, stainless appliances, lots of counter and storage space, and an eating bar with space for 3 bar stools! The great room here has a built in tv shelf with storage, and custom barnwood wall feature! This original owner suite also comes with one of the best underground parking stalls in the building with attached storage cage, just a few steps to the elevator! (id:6769)

Living room Measurements not available

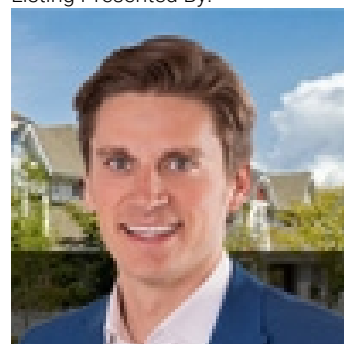
Dining room Measurements not available

Kitchen Measurements not available

Den Measurements not available

Primary Bedroom Measurements not available

Listing Presented By:



Originally Listed by:  
RE/MAX Elite

<http://www.eddydambrosio.com/>



CREA

DDF

#230, 70 Mcleod Ave , Spruce  
Grove, AB,

Phone: 780-920-0550  
tyson@royallepage.ca

The property information on this website is derived from the Canadian Real Estate Association's Data Distribution Facility (DDF®). DDF® references real estate listings held by various brokerage firms and franchisees. The accuracy of information is not guaranteed and should be independently verified. The trademarks REALTOR®, REALTORS® and the REALTOR® logo are controlled by The Canadian Real Estate Association (CREA) and identify real estate professionals who are members of CREA. The trademarks MLS®, Multiple Listing Service® and the associated logos are owned by CREA and identify the quality of services provided by real estate professionals who are members of CREA.