



Edmonton Alberta

\$384,900

\$50,000 IN NEW, PROFESSIONAL UPGRADES, SOUTH YARD! Massive professional upgrades including: all new paint, new flooring (vinyl plank), new baseboards, new kitchen including cabinets/quartz counters, new bathrooms, new interior doors, new exterior doors, new light fixtures, new windows, new furnace/HWT, shingles, etc., etc. Sunny, south yard. Quiet street. Short walk to elementary and junior high school. Close to Grey Nuns Hospital. (id:6769)

Living room Measurements not available

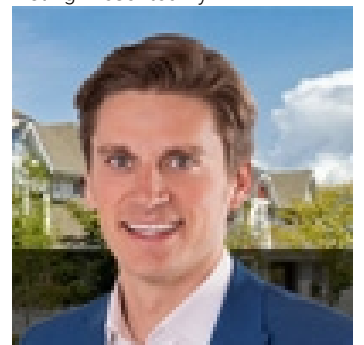
Kitchen Measurements not available

Primary Bedroom Measurements not available

Bedroom 2 Measurements not available

Bedroom 3 Measurements not available

Listing Presented By:



Originally Listed by:
RE/MAX Elite

<http://www.peterdschalin.com/>



CREA

DDF

#230, 70 Mcleod Ave , Spruce
Grove, AB,

Phone: 780-920-0550
tyson@royalpage.ca

The property information on this website is derived from the Canadian Real Estate Association's Data Distribution Facility (DDF®). DDF® references real estate listings held by various brokerage firms and franchisees. The accuracy of information is not guaranteed and should be independently verified. The trademarks REALTOR®, REALTORS® and the REALTOR® logo are controlled by The Canadian Real Estate Association (CREA) and identify real estate professionals who are members of CREA. The trademarks MLS®, Multiple Listing Service® and the associated logos are owned by CREA and identify the quality of services provided by real estate professionals who are members of CREA.