

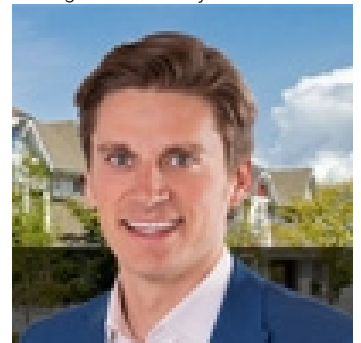


# 45960 STEVENSON Road Chilliwack British Columbia

\$959,000

Wonderful 5bed/3bath home in beautiful Sardis Park! A large 2700+ Square foot home on a 9100+ square foot lot (.21 acre). Upstairs offers a generous sized open concept living area with updated kitchen and flooring. 3 bedrooms including primary bedroom with full ensuite! Downstairs offers 2 more bedrooms and a kitchenette with separate entrance. All this on a spacious private fenced lot with mature trees for total privacy. Central location, walking distance to shopping, groceries and Sardis Park! Call today to book your private showing! (id:6769)

Listing Presented By:



Originally Listed by:  
Century 21 Creekside Realty

<http://www.kevinalexander.ca/>



CREA

DDF

#230, 70 Mcleod Ave , Spruce Grove, AB,

Phone: 780-920-0550  
[tyson@royallepage.ca](mailto:tyson@royallepage.ca)

The property information on this website is derived from the Canadian Real Estate Association's Data Distribution Facility (DDF®). DDF® references real estate listings held by various brokerage firms and franchisees. The accuracy of information is not guaranteed and should be independently verified. The trademarks REALTOR®, REALTORS® and the REALTOR® logo are controlled by The Canadian Real Estate Association (CREA) and identify real estate professionals who are members of CREA. The trademarks MLS®, Multiple Listing Service® and the associated logos are owned by CREA and identify the quality of services provided by real estate professionals who are members of CREA.