



Rural Parkland County Alberta

\$475,000

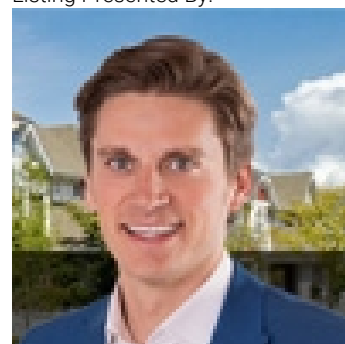
WATERFRONT property on JACKFISH Lake. This double-wide lot in KENGLINED offers exceptional shoreline water access and outstanding views. The property includes a three-bedroom summer cabin featuring a partial kitchen and a separate bathhouse with a bathroom, washer/dryer, and sink. Also featuring a newly constructed deck and stairs. There is ample parking space at the top, with room for a smaller to mid-size travel trailer. The property has above-ground water cisterns and underground septic holding tanks. An aluminum dock is also included. Jackfish Lake is known for its excellent summer and winter conditions, perfect for recreational watersport activities such as waterskiing, canoeing, kayaking, and paddleboarding. It's a deep, clean, spring-fed lake that's great for fishing enthusiasts. This is a rare opportunity to own a sought-after lakefront property just 20 minutes from Stony Plain and Spruce Grove. (id:6769)

Primary Bedroom Measurements not available

Bedroom 3 Measurements not available

Bedroom 2 Measurements not available

Listing Presented By:



Originally Listed by:
Royal LePage Noralta Real Estate

<https://tysonmoroz.com/>



CREA

DDF

#230, 70 Mcleod Ave , Spruce Grove, AB,

Phone: 780-920-0550
tyson@royallepage.ca

The property information on this website is derived from the Canadian Real Estate Association's Data Distribution Facility (DDF®). DDF® references real estate listings held by various brokerage firms and franchisees. The accuracy of information is not guaranteed and should be independently verified. The trademarks REALTOR®, REALTORS® and the REALTOR® logo are controlled by The Canadian Real Estate Association (CREA) and identify real estate professionals who are members of CREA. The trademarks MLS®, Multiple Listing Service® and the associated logos are owned by CREA and identify the quality of services provided by real estate professionals who are members of CREA.