

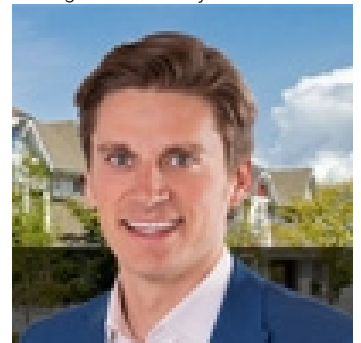


Edmonton Alberta

\$675,000

Sunny west backing Ravine lot in prestigious Keswick on the River. Nearly 7000sf estate lot with a 42' building pocket, nestled on a quiet street backing natural reserve & the North Saskatchewan River. Your freedom to choose any custom builder to complete your dream home. Keswick on the River is a family friendly exclusive neighborhood with superior architectural requirements to maintain a higher standard of quality. Quick commute to all servicing amenities including multiple golf courses, ski clubs, recreation centers, parks, multiple schools, restaurants & shopping. (id:6769)

Listing Presented By:



Originally Listed by:
RE/MAX Elite

<http://www.alangee.com/>



CREA

DDF

#230, 70 Mcleod Ave , Spruce
Grove, AB,

Phone: 780-920-0550
tyson@royallepage.ca

The property information on this website is derived from the Canadian Real Estate Association's Data Distribution Facility (DDF®). DDF® references real estate listings held by various brokerage firms and franchisees. The accuracy of information is not guaranteed and should be independently verified. The trademarks REALTOR®, REALTORS® and the REALTOR® logo are controlled by The Canadian Real Estate Association (CREA) and identify real estate professionals who are members of CREA. The trademarks MLS®, Multiple Listing Service® and the associated logos are owned by CREA and identify the quality of services provided by real estate professionals who are members of CREA.