



Rural Parkland County Alberta

\$111,500

Expect the unexpected when you step into this grand single wide bungalow-style home. Spanning a very welcoming 1,224 sq ft of living space, it separates itself from the others with its walls completely finished with drywall, and adorning fresh neutral colours throughout. Follow the flow of dark laminate flooring from the immense front living room, into the cabinet-rich kitchen, where stainless steel appliances shine from the skylight overhead. Privately placed just past the laundry room, is the lavish primary bedroom, offering an immense space for king size sets, plush carpet, & a full 5pc ensuite with his 'n hers sinks and a soaker tub. On the other end of the home, you'll find two more bedrooms (one almost as big as the primary) freshly painted and finished with low-maintenance vinyl plank flooring; both are serviced by a 4pc main bathroom. The value of this rare find is escalated further by your own party-ready deck & the large fenced & landscaped corner lot that it all resides on. Two parking spaces! (id:6769)

Living room 14'11 x 14'3

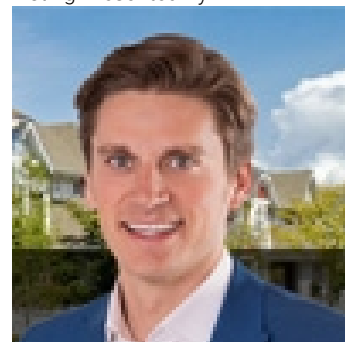
Kitchen 16'2 x 14'11

Primary Bedroom 14'11 x 13'2

Bedroom 2 14'11 x 11'4

Bedroom 3 9'6 x 7'7

Listing Presented By:



Originally Listed by:
Royal LePage Noralta Real Estate

<http://movewithmarty.realtor/>



**Royal
Le Page Noralta Spruce Grove**

#230, 70 Mcleod Ave , Spruce
Grove, AB,

Phone: 780-920-0550

Fax:

tyson@royallepage.ca

The property information on this website is derived from the Canadian Real Estate Association's Data Distribution Facility (DDF®). DDF® references real estate listings held by various brokerage firms and franchisees. The accuracy of information is not guaranteed and should be independently verified. The trademarks REALTOR®, REALTORS® and the REALTOR® logo are controlled by The Canadian Real Estate Association (CREA) and identify real estate professionals who are members of CREA. The trademarks MLS®, Multiple Listing Service® and the associated logos are owned by CREA and identify the quality of services provided by real estate professionals who are members of CREA.