

## Rural Leduc County Alberta

\$874,900

NEWER CUSTOM HOME ON MATURE TREED LAND! OUT OF SUBDIVISION! PRIVATE & SERENE! 25 MINS TO LEDUC! Straight out of a Canmore chalet to Leduc County, this 1946 sq ft 5 bed, 3 bath, 3 level split on gorgeous property has been impeccably designed & ready for your family! Feat: upgraded exterior finishings, vaulted ceiling w/ wood beams, 3 tier deck & front porch, vinyl plank flooring, floor to ceiling gas fireplace, quartz countertops w/ soft close cabinetry, 30' deep garage w/ 9' garage high doors, 10' ceiling in basement, & more! Tree lined entryway leads inside to your open concept living / dining / kitchen space; superb for entertaining w/ gorgeous views east & west! A few steps down you find 3 large bedrooms, including the primary bed w/ stunning 5 pce ensuite, w-in closet & access to the deck! 3 pce shower & laundry room. Your lower level brings 2 more huge bedrooms w/ another 4 pce bathroom for convenience. Treed behind to the property line w/ space to build your dream shop; a rare piece of paradise! (id:6769)

Bedroom 4 3.35 m X 4.93 m

Bedroom 5 3.7 m X 4.96 m

Living room 5.68 m X 5.67 m

Dining room 2.7 m X 4.1 m

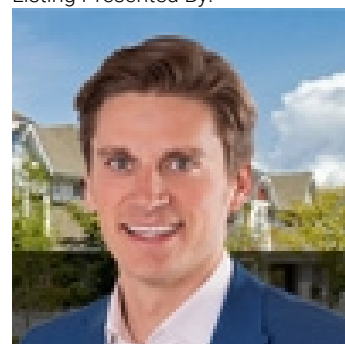
Kitchen 4.11 m X 5.8 m

Primary Bedroom 4.54 m X 4.25 m

Bedroom 2 3.58 m X 5.49 m

Bedroom 3 3.23 m X 3.07 m

Listing Presented By:



Originally Listed by:  
RE/MAX Elite

<http://kevindoyle.remax.ca/>



CREA

DDF

#230, 70 Mcleod Ave , Spruce Grove, AB,

Phone: 780-920-0550  
tyson@royallepage.ca

The property information on this website is derived from the Canadian Real Estate Association's Data Distribution Facility (DDF®). DDF® references real estate listings held by various brokerage firms and franchisees. The accuracy of information is not guaranteed and should be independently verified. The trademarks REALTOR®, REALTORS® and the REALTOR® logo are controlled by The Canadian Real Estate Association (CREA) and identify real estate professionals who are members of CREA. The trademarks MLS®, Multiple Listing Service® and the associated logos are owned by CREA and identify the quality of services provided by real estate professionals who are members of CREA.