



Rural Leduc County Alberta

\$1,739,000

LOCATION! 5 mins SW of Leduc. Custom walkout bungalow w/ a 40 x 60 completed finished heated SHOP w/ mezzanine, 2 piece bath, heated triple car garage. Privacy gate & long drive leads to property. Custom bungalow has everything. Grand entrance leads to vaulted ceilings in great rm, stone fireplace, flr to ceiling windows, dining rm w/ coffered ceilings. Gourmet kitchen w/ custom cabinets, granite, 8 burner gas stove, large island, huge walkin pantry. Large eating area w/ windows surrounding, bench seat. Main flr laundry w/custom cabinets, sink, granite. Mud room w/ built ins, 2 piece powder rm, built in office area. Primary suite has gas fireplace, hardwood flrs, garden door to deck. Ensuite has dual sinks, jacuzzi, custom shower, walk-in closet. FF walk-out basement features custom bar, family rm with gas fireplace, 3 bdrms, 2 baths. Professionlly landscaped, backyard completely fenced, custom firepit area, covered decks. Central AC, infloor heating, ICF concrete walls to rafters, IMMACULATE inside/out! (id:6769)

Family room 8.77 m X 9.92 m

Bedroom 2 4.65 m X 3.58 m

Bedroom 3 6.52 m X 3.62 m

Bedroom 4 3.64 m X 4.44 m

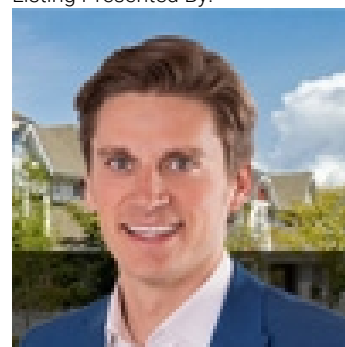
Living room 5.19 m X 4.68 m

Dining room 4.58 m X 2.44 m

Kitchen 6.12 m X 4.58 m

Primary Bedroom 4.61 m X 4.73 m

Listing Presented By:



Originally Listed by:
RE/MAX Elite



Royal

Le Page Noralta Spruce Grove

#230, 70 Mcleod Ave , Spruce Grove, AB,

Phone: 780-920-0550

Fax:

tyson@royallepage.ca

The property information on this website is derived from the Canadian Real Estate Association's Data Distribution Facility (DDF®). DDF® references real estate listings held by various brokerage firms and franchisees. The accuracy of information is not guaranteed and should be independently verified. The trademarks REALTOR®, REALTORS® and the REALTOR® logo are controlled by The Canadian Real Estate Association (CREA) and identify real estate professionals who are members of CREA. The trademarks MLS®, Multiple Listing Service® and the associated logos are owned by CREA and identify the quality of services provided by real estate professionals who are members of CREA.