



Edmonton Alberta

\$229,000

Convenient living meets comfort at the Regent Century Park. Condo Fees INCLUDE heat, AC, water, electricity & internet!! 5th floor living offers CITY VIEWS that can be enjoyed on sizeable balcony. Open concept layout featuring trendy finishes & plenty of natural light (WEST FACING). The room centres around the spacious kitchen with an oversized quartz floating island, plenty of cabinetry & Kitchen Aid appliances. Living room has gas fireplace & balcony access. Area complete with dining nook or alternatively use as office space. Large bedroom has walkthrough closet to ensuite with soaker tub, tiled shower & trendy vanity. Plus IN-SUITE LAUNDRY. Upgrades include quartz counters, beautiful marble tile bathroom, 9' ceilings plus NEWER AC unit. Great space for young business professionals, couples or those looking to downsize. Building also has gym in common area. STEPS AWAY TO LRT, transit, shopping, restaurants & major arteries. Property also includes titled UNDERGROUND PARKING plus titled STORAGE LOCKER. (id:6769)

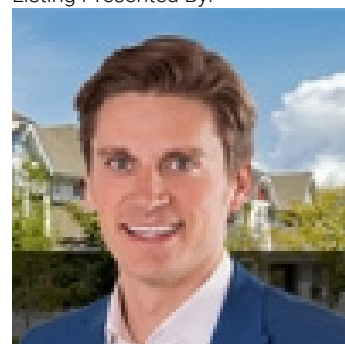
Living room 4.03 m X 3.34 m

Dining room 2.7 m X 2.25 m

Kitchen 2.92 m X 3.21 m

Primary Bedroom 3.37 m X 3.35 m

Listing Presented By:



Originally Listed by:
RE/MAX Elite

<http://www.alangee.com/>



Royal

Le Page Noralta Spruce Grove

#230, 70 Mcleod Ave , Spruce Grove, AB,

Phone: 780-920-0550

Fax:

tyson@royallepage.ca

The property information on this website is derived from the Canadian Real Estate Association's Data Distribution Facility (DDF®). DDF® references real estate listings held by various brokerage firms and franchisees. The accuracy of information is not guaranteed and should be independently verified. The trademarks REALTOR®, REALTORS® and the REALTOR® logo are controlled by The Canadian Real Estate Association (CREA) and identify real estate professionals who are members of CREA. The trademarks MLS®, Multiple Listing Service® and the associated logos are owned by CREA and identify the quality of services provided by real estate professionals who are members of CREA.