



Edmonton Alberta

\$249,900

River Valley steps away? CHECK. Walkability? CHECK. Affordable Concrete Highrise? CHECK. Well managed building with reasonable condo fees? CHECK. Pubs, shopping, restaurants, schools nearby? CHECK CHECK CHECK. TWO BED/TWO BATH BRIGHT & TRENDY apartment on the 5th floor. Massive windows overlook a large covered balcony- perfect for an early morning coffee or after-work cocktails. The kitchen is Large and features a HUGE PANTRY. Enjoy an IN-SUITE Laundry Room. AIR CONDITIONING in the main living area. The main bath has a door that leads to a WALK-THROUGH CLOSET to the second bedroom. Perfect to rent out to two people, for students, professionals, downsizers. PRIMARY BEDROOM boasts a three piece ensuite. One titled parking stall. VISITOR PARKING at the side of the building. The OMEGA features a good quality gym with big south-facing windows. A BISTRO on the main floor offers coffee and sandwiches but you don't have to go far for any type of food or drinks regardless. AMAZING opportunity at a GREAT PRICE. (id:6769)

Living room 4.96 m X 3.12 m

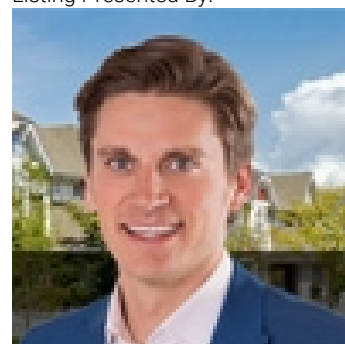
Kitchen 2.63 m X 3.03 m

Primary Bedroom 3.8 m X 2.94 m

Bedroom 2 2.69 m X 3.24 m

Laundry room 1.38 m X 1.76 m

Listing Presented By:



Originally Listed by:
RE/MAX Elite



Royal

Le Page Noralta Spruce Grove

#230, 70 Mcleod Ave , Spruce Grove, AB,

Phone: 780-920-0550

Fax:

tyson@royallepage.ca

The property information on this website is derived from the Canadian Real Estate Association's Data Distribution Facility (DDF®). DDF® references real estate listings held by various brokerage firms and franchisees. The accuracy of information is not guaranteed and should be independently verified. The trademarks REALTOR®, REALTORS® and the REALTOR® logo are controlled by The Canadian Real Estate Association (CREA) and identify real estate professionals who are members of CREA. The trademarks MLS®, Multiple Listing Service® and the associated logos are owned by CREA and identify the quality of services provided by real estate professionals who are members of CREA.