



Stony Plain Alberta

\$198,000

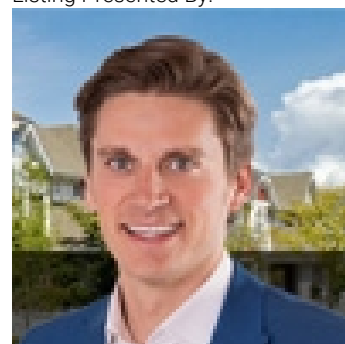
Luxury TOP FLOOR Condo unit in the prestigious BARTH & GOSSET MANOR, a premium concrete/steel constructed building designed for optimal strength & quiet living; located on Main Street in the heart of STONY PLAINS downtown core & just steps away from restaurants, cafes, library, shopping & all the charm & culture this vibrant community has to offer. Freshly painted (June 2025), this west facing LUXURY 1 bedroom unit w/TWO TITLED underground parking stalls is conveniently located just steps from the elevator providing ease of access. Featuring 9' ceilings, w/a bright open concept living space complete w/rich cabinetry, granite cntrs, SS appliances & a cozy gas corner FP. Unit has in suite laundry & a large balcony w/natural gas BBQ hookup. Additional building amenities include: social rooms, activity room, fireside lounge sitting area, games room & a car wash! CONDO FEES include: gas, water/sewer, heating, garbage, exterior maintenance etc. Immediate Occupancy MOVE IN READY! Please note: No Pets Allowed (id:6769)

Living room Measurements not available

Primary Bedroom Measurements not available

Kitchen Measurements not available

Listing Presented By:



Originally Listed by:
Royal LePage Noralta Real Estate

<https://tysonmoroz.com/>



Royal

Le Page Noralta Spruce Grove

#230, 70 Mcleod Ave , Spruce Grove, AB,

Phone: 780-920-0550

Fax:

tyson@royalpage.ca

The property information on this website is derived from the Canadian Real Estate Association's Data Distribution Facility (DDF®). DDF® references real estate listings held by various brokerage firms and franchisees. The accuracy of information is not guaranteed and should be independently verified. The trademarks REALTOR®, REALTORS® and the REALTOR® logo are controlled by The Canadian Real Estate Association (CREA) and identify real estate professionals who are members of CREA. The trademarks MLS®, Multiple Listing Service® and the associated logos are owned by CREA and identify the quality of services provided by real estate professionals who are members of CREA.