



## Fort Saskatchewan Alberta

\$599,900

Dont miss out on this incredible home featuring a double attached garage, 3 bedrooms, and 3 full baths! After parking in the garage, step into the spacious mudroom, designed with built in storage to keep everything tidy and organized. At the front of the home, you'll find a 3 piece bathroom, a den/bedroom, and a foyer with a convenient closet. Toward the back, the open chefs kitchen offers plenty of cabinets and counter space, flowing into a large living room with soaring 18-foot ceilings, an electric fireplace, and a dining area with access to the backyard. Heading upstairs, a bonus room brings a bright, open feel to the second floor. Here, you'll find the laundry room, a full bathroom, two bedrooms, and a primary suite complete with a walk-in closet and an ensuite bathroom featuring dual sinks. Located in South fort this home combines functionality and style, ideal for comfortable living. Close to many amenities! (id:6769)

Living room 4.69 m X 3.37 m

Dining room 3.64 m X 1.96 m

Kitchen 2.89 m X 3.65 m

Den 3.18 m X 2.68 m

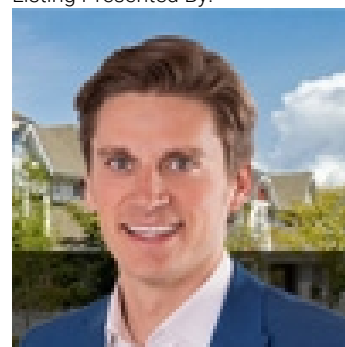
Primary Bedroom 4.06 m X 4.24 m

Bedroom 2 3.52 m X 3.07 m

Bedroom 3 3.06 m X 3.45 m

Bonus Room 4.12 m X 3.64 m

Listing Presented By:



Originally Listed by:  
RE/MAX Real Estate

<http://www.timbakerrealty.com/>



CREA

DDF

#230, 70 Mcleod Ave , Spruce  
Grove, AB,

Phone: 780-920-0550  
tyson@royallepage.ca

The property information on this website is derived from the Canadian Real Estate Association's Data Distribution Facility (DDF®). DDF® references real estate listings held by various brokerage firms and franchisees. The accuracy of information is not guaranteed and should be independently verified. The trademarks REALTOR®, REALTORS® and the REALTOR® logo are controlled by The Canadian Real Estate Association (CREA) and identify real estate professionals who are members of CREA. The trademarks MLS®, Multiple Listing Service® and the associated logos are owned by CREA and identify the quality of services provided by real estate professionals who are members of CREA.