



## Rural Parkland County Alberta

\$375,000

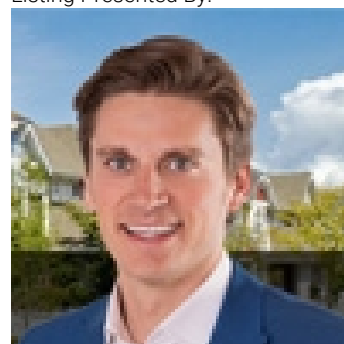
Set on 4.55 acres of open space, out-of-subdivision- this charming countryside property features a character-filled home estimated to be built in the 1950s. While the interior remains largely original, key upgrades over the years include the shingles, furnace, and hot water tank. The home offers a functional layout with a 4-piece bathroom on the main floor and a 2-piece bathroom upstairs. Additional highlights include a drilled well and a recently installed septic tank and field. Whether you're looking to restore, renovate, or rebuild, this property offers a great opportunity in a peaceful rural setting. (id:6769)

Primary Bedroom Measurements not available

Bedroom 3 Measurements not available

Bedroom 2 Measurements not available

Listing Presented By:



Originally Listed by:  
Royal LePage Noralta Real Estate

<https://tysonmoroz.com/>



**Royal**

**Le Page Noralta Spruce Grove**

#230, 70 Mcleod Ave , Spruce Grove, AB,

Phone: 780-920-0550

Fax:

[tyson@royallepage.ca](mailto:tyson@royallepage.ca)

The property information on this website is derived from the Canadian Real Estate Association's Data Distribution Facility (DDF®). DDF® references real estate listings held by various brokerage firms and franchisees. The accuracy of information is not guaranteed and should be independently verified. The trademarks REALTOR®, REALTORS® and the REALTOR® logo are controlled by The Canadian Real Estate Association (CREA) and identify real estate professionals who are members of CREA. The trademarks MLS®, Multiple Listing Service® and the associated logos are owned by CREA and identify the quality of services provided by real estate professionals who are members of CREA.