



Edmonton Alberta

\$499,900

Located in the heart of Windermere, Keswick Landing is a thriving new community that embodies style, value and location. You can your family can enjoy the benefits of a community that continues to grow as you do! With over 1450 square feet of open concept living space, the Soho-D is built with your growing family in mind. This duplex home features 3 bedrooms, 2.5 bathrooms and chrome faucets throughout. Enjoy extra living space on the main floor with the laundry room and full sink on the second floor. The 9-foot ceilings and quartz countertops throughout blends style and functionality for your family to build endless memories. PICTURES ARE OF SHOWHOME; ACTUAL HOME, PLANS, FIXTURES, AND FINISES MAY VARY & SUBJECT TO AVAILABILITY/CHANGES! (id:6769)

Living room 2.69 m X 3.6 m

Dining room 3.12 m X 2.97 m

Kitchen 2.86 m X 4.95 m

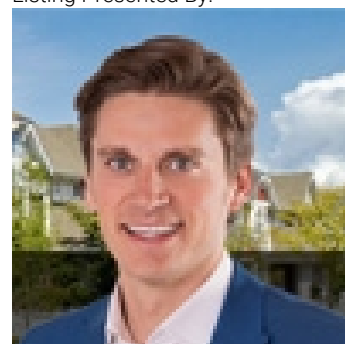
Primary Bedroom 4.08 m X 3.75 m

Bedroom 2 2.81 m X 3.79 m

Bedroom 3 2.82 m X 4.3 m

Laundry room 2.57 m X 1.81 m

Listing Presented By:



Originally Listed by:
Century 21 All Stars Realty Ltd

<http://www.michaelsells.ca/>



Royal

Le Page Noralta Spruce Grove

#230, 70 Mcleod Ave , Spruce
Grove, AB,

Phone: 780-920-0550
Fax:
tyson@royalpage.ca

The property information on this website is derived from the Canadian Real Estate Association's Data Distribution Facility (DDF®). DDF® references real estate listings held by various brokerage firms and franchisees. The accuracy of information is not guaranteed and should be independently verified. The trademarks REALTOR®, REALTORS® and the REALTOR® logo are controlled by The Canadian Real Estate Association (CREA) and identify real estate professionals who are members of CREA. The trademarks MLS®, Multiple Listing Service® and the associated logos are owned by CREA and identify the quality of services provided by real estate professionals who are members of CREA.