



Fort Saskatchewan Alberta

\$359,900

Welcome HOME! This charming 2009 half duplex offers 3 bedrooms, a bonus room, and 3.5 bathrooms, with 1,561 sq. ft. of living space, fully finished basement and an attached single car garage on a Pie Shaped LOT. The main floor boasts a spacious, open layout with a bright living room offering a tile surround gas fire-place, spacious dining room, and kitchen, making this the ideal home for family gatherings. The two main bedrooms and bonus room are upstairs, while the third bedroom you'll find is in the basement. The basement offers a spacious family room with an electric fire-place, 3 piece bathroom, laundry & 3rd bedroom. Outside, you have your fully fenced pie-shaped backyard, a deck perfect for outdoor entertaining, BBQ's & privacy. All this is conveniently located near schools, shopping, trails, parks, offering comfort & space, in a prime location! Don't miss the opportunity to make it yours! (id:6769)

Bedroom 3 7'10" x 12'

Laundry room Measurements not available

Recreation room 18'3 x 23'8

Living room 19'3 x 12'6

Dining room 12'7 x 10'11

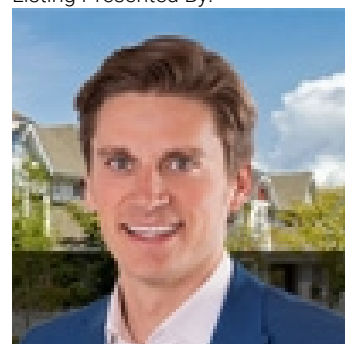
Kitchen 14'10 x 11'9

Primary Bedroom 13'11 x 12'10

Bedroom 2 10'3 x 13'8

Bonus Room 8'7 x 15'5

Listing Presented By:



Originally Listed by:
Realty Executives Focus



CREA

DDF

#230, 70 Mcleod Ave , Spruce
Grove, AB,

Phone: 780-920-0550
tyson@royallepage.ca

The property information on this website is derived from the Canadian Real Estate Association's Data Distribution Facility (DDF®). DDF® references real estate listings held by various brokerage firms and franchisees. The accuracy of information is not guaranteed and should be independently verified. The trademarks REALTOR®, REALTORS® and the REALTOR® logo are controlled by The Canadian Real Estate Association (CREA) and identify real estate professionals who are members of CREA. The trademarks MLS®, Multiple Listing Service® and the associated logos are owned by CREA and identify the quality of services provided by real estate professionals who are members of CREA.