



## Rural Lac Ste. Anne County Alberta

\$775,000

A 4-Bed Executive Walkout Bungalow with a Lake View!!! This beauty has been extensively upgraded in the last 4 years. Updates include: Central Air, All Appliances replaced, Duradeck and Gas Windbreak on Upper Deck, Patio Extension, Custom Built-Ins, Fireplace Sink and Fridge in Family Room, Kwik-Kurb and In-Ground Sprinklers, High-End Blinds, and Pullouts added to Cabinets. The great room is perfect for entertaining, and enjoys spectacular views of the Lake! The kitchen has an island w/ seating, quartz counters and corner pantry. Hardwood flows throughout, and the covered upper deck provides a sheltered place to relax. The primary suite has a 5-pc ensuite and a view. The walkout basement has a spacious family room featuring an extended fireplace, wet bar, and games area. A covered patio looks out over the landscaped yard. Situated in the prestigious Estates at Water's Edge, this property enjoys municipal services, clubhouse, marina and fitness centre, pool and park. 20 mins to Stony & 40 mins to Edmonton. (id:6769)

Family room 5.19 m X 5.78 m

Bedroom 3 3.29 m X 3.18 m

Bedroom 4 4.16 m X 3.54 m

Recreation room 3.38 m X 6.13 m

Living room 5.95 m X 4.39 m

Dining room 3.43 m X 4.07 m

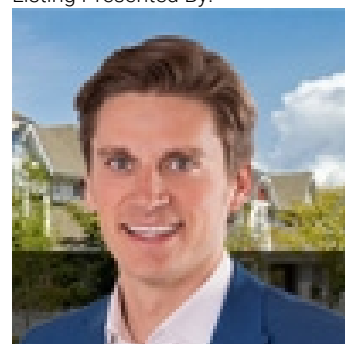
Kitchen 3.96 m X 3.24 m

Primary Bedroom 4.43 m X 3.79 m

Bedroom 2 3.16 m X 2.99 m

Laundry room 1.86 m X 2.74 m

Listing Presented By:



Originally Listed by:  
RE/MAX Elite

<http://www.thegabouryteam.com/>



**Royal  
Le Page Noralta Spruce Grove**

#230, 70 Mcleod Ave , Spruce  
Grove, AB,

Phone: 780-920-0550  
Fax:  
tyson@royalpage.ca

The property information on this website is derived from the Canadian Real Estate Association's Data Distribution Facility (DDF®). DDF® references real estate listings held by various brokerage firms and franchisees. The accuracy of information is not guaranteed and should be independently verified. The trademarks REALTOR®, REALTORS® and the REALTOR® logo are controlled by The Canadian Real Estate Association (CREA) and identify real estate professionals who are members of CREA. The trademarks MLS®, Multiple Listing Service® and the associated logos are owned by CREA and identify the quality of services provided by real estate professionals who are members of CREA.