



Edmonton Alberta

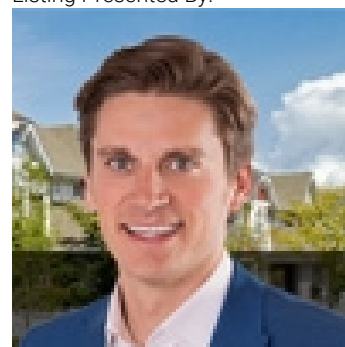
\$2,149,800

Premium location in Uplands of Mactaggart facing ravine, w/direct access to walking trails, steps to ponds, park & within catchment of 6 schools. This estate home is complete w/nearly 7500sf of total living space, quad garage, 6 living areas, 6 bedrms+2 flex rooms, 2 full kitchens & 7 bathrms. Numerous upgrades throughout: upgraded mechanicals, multi-zone infloor heating, A/V equipment, extensive custom millwork, 8' doors, soaring ceilings, open tread staircase, 4gas fireplaces, multiple indoor/outdoor dining & great curb appeal. 20' foyer w/gleaming tile & designer detail welcomes you through an open/naturally lit home. Main floor highlights a front greeting room, formal dining, great room, butler's pantry, full kitchens & 2 powder rooms, well serving an entertaining family. Convenient main floor bedrm & full bathrm. Upper level boasts a loft, bonus room, open to below views, 4 bedrms incl oversized primary bedroom. Lower level features dual rec areas, theatre, exercise, wet bar & bedroom/full bathroom (id:6769)

Family room 6.89 m X 6 m
 Media 6.43 m X 4.57 m
 Bedroom 6 3.8 m X 3.42 m
 Recreation room 10.88 m X 5.3 m
 Living room 4.71 m X 4.17 m
 Dining room 4.55 m X 3.9 m
 Kitchen 5.94 m X 5.22 m
 Bedroom 2 4.84 m X 5.15 m

Second Kitchen 3.62 m X 3.21 m
 Great room 6.78 m X 5.26 m
 Primary Bedroom 6.07 m X 4.54 m
 Bedroom 3 3.96 m X 3.74 m
 Bedroom 4 3.9 m X 3.96 m
 Bonus Room 5.46 m X 4.58 m
 Bedroom 5 3.97 m X 3.43 m

Listing Presented By:



Originally Listed by:
 RE/MAX Elite

<http://www.alangee.com/>



CREA

DDF

#230, 70 Mcleod Ave , Spruce Grove, AB,

Phone: 780-920-0550
 tyson@royallepage.ca

The property information on this website is derived from the Canadian Real Estate Association's Data Distribution Facility (DDF®). DDF® references real estate listings held by various brokerage firms and franchisees. The accuracy of information is not guaranteed and should be independently verified. The trademarks REALTOR®, REALTORS® and the REALTOR® logo are controlled by The Canadian Real Estate Association (CREA) and identify real estate professionals who are members of CREA. The trademarks MLS®, Multiple Listing Service® and the associated logos are owned by CREA and identify the quality of services provided by real estate professionals who are members of CREA.