



Edmonton Alberta

\$424,900

Better than new! Enjoy the perks of a newer build without having to deal with landscaping, fencing, window coverings & building a deck - this home has it all done. With a smart open-concept layout & roughly 1330 sqft, it showcases neutral tones & quality finishes throughout. From the moment you enter, the 9ft ceilings & seamless flow between the living, dining & kitchen areas stand out. The kitchen features stainless steel appliances, granite countertops, subway tile backsplash & stylish two-tone cabinets. Upstairs offers 3 bedrooms, including a spacious primary suite with a 4pc ensuite & large walk-in closet. Another full bathroom & convenient upper floor laundry complete the second level. The unfinished basement awaits your personal touch. Enjoy sunny days in the south-facing backyard from your private deck. Additional perks include no condo fees, central A/C & an oversized single detached garage! (id:6769)

Living room Measurements not available

Dining room Measurements not available

Kitchen Measurements not available

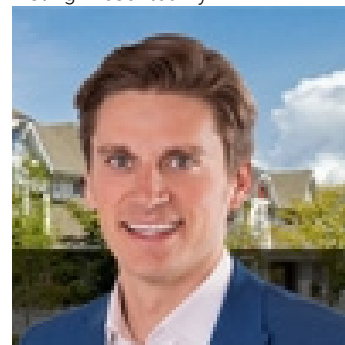
Primary Bedroom Measurements not available

Bedroom 2 Measurements not available

Bedroom 3 Measurements not available

Laundry room Measurements not available

Listing Presented By:



Originally Listed by:
RE/MAX Elite



Royal

Le Page Noralta Spruce Grove

#230, 70 Mcleod Ave , Spruce Grove, AB,

Phone: 780-920-0550

Fax:

tyson@royallepage.ca

The property information on this website is derived from the Canadian Real Estate Association's Data Distribution Facility (DDF®). DDF® references real estate listings held by various brokerage firms and franchisees. The accuracy of information is not guaranteed and should be independently verified. The trademarks REALTOR®, REALTORS® and the REALTOR® logo are controlled by The Canadian Real Estate Association (CREA) and identify real estate professionals who are members of CREA. The trademarks MLS®, Multiple Listing Service® and the associated logos are owned by CREA and identify the quality of services provided by real estate professionals who are members of CREA.