



Fort Saskatchewan Alberta

\$449,000

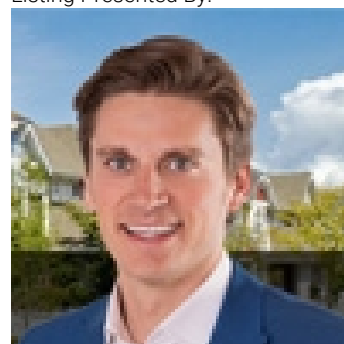
Welcome Home! Step into The Emerald, a stunning & functional creation by the award-winning Justin Gray Homes, now available in our brand-new urban Craftsman V2, professionally designed colour palette. This is a first-of-its-kind home in the family friendly community of Sienna, conveniently located near schools, recreation, and more! Spanning 1,658 sq ft, this home perfectly balances beauty and affordability. The main level features LVP flooring, while plush carpet adds comfort upstairs. A BONUS ROOM on the upper level provides a cozy retreat away from the main living area, and the UPSTAIRS LAUNDRY adds everyday convenience. Built with an upgraded 32MPA foundation featuring Delta wrap on tar-sprayed concrete walls, upgraded triple-pane windows, etc. The kitchen impresses with its walk-in pantry, upgraded shaker soft-close cabinetry, and premium fixtures, making it a chef's oasis. This home comes FULLY LANDSCAPED and includes a poured concrete double garage pad *photos of similar model. Finishes may vary (id:6769)

Primary Bedroom 13 m x Measurements not available

Bedroom 3 9.8 m X 9 m

Bedroom 2 9.4 m X 10.2 m

Listing Presented By:



Originally Listed by:
MaxWell Polaris

<http://forsale.yeg.com/>



Royal

Le Page Noralta Spruce Grove

#230, 70 Mcleod Ave , Spruce Grove, AB,

Phone: 780-920-0550
Fax:
tyson@royalpage.ca

The property information on this website is derived from the Canadian Real Estate Association's Data Distribution Facility (DDF®). DDF® references real estate listings held by various brokerage firms and franchisees. The accuracy of information is not guaranteed and should be independently verified. The trademarks REALTOR®, REALTORS® and the REALTOR® logo are controlled by The Canadian Real Estate Association (CREA) and identify real estate professionals who are members of CREA. The trademarks MLS®, Multiple Listing Service® and the associated logos are owned by CREA and identify the quality of services provided by real estate professionals who are members of CREA.