



Edmonton Alberta

\$840,000

Welcome to Keswick on the River where this beautifully upgraded Kimberly home offers over 2,400sf of living space PLUS a fully finished basement. With a rear south exposure, natural light fills the home w/ sweeping vaulted ceilings & windows galore. Gravitate towards a stunning fireplace w ceiling-height tile feature in the open concept living room. Dining & kitchen expand into this space for the perfect area to host friends & family. Kitchen boasts top-end Miele appliances (including steam oven), o/s quartz island & upgraded cabinetry. Main floor complete w/ den, 3pc bthrm, sizeable mudroom/laundry & walk through pantry. Upstairs find huge primary suite w/ spa-like ensuite & walk-in closet. 2 more bedrooms, 4pc bthrm & bonus rm complete upper level. Recently finished basement offers recreation space, wet bar, beautifully finished 3pc bathroom & huge bedroom. Other features include new AC, water softener, custom blinds, wide-plank hardwood, composite deck, landscaping w/ mature perennials & so much more. (id:6769)

Bedroom 4 3.83 m X 3.06 m

Recreation room 4.22 m X 2.7 m

Living room 3.33 m X 4.06 m

Dining room 2.8 m X 4.23 m

Kitchen 3.4 m X 4.18 m

Den 2.82 m X 3.4 m

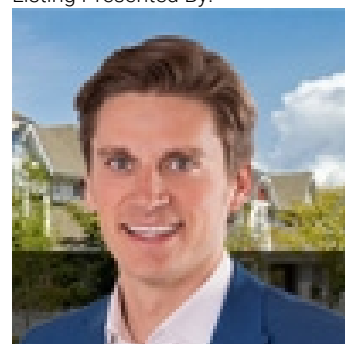
Primary Bedroom 4.47 m X 4.55 m

Bedroom 2 3.12 m X 4.02 m

Bedroom 3 4.35 m X 2.96 m

Bonus Room 4.72 m X 3.5 m

Listing Presented By:



Originally Listed by:
RE/MAX Elite

<http://www.alangee.com/>



CREA

DDF

#230, 70 Mcleod Ave , Spruce Grove, AB,

Phone: 780-920-0550
tyson@royallepage.ca

The property information on this website is derived from the Canadian Real Estate Association's Data Distribution Facility (DDF®). DDF® references real estate listings held by various brokerage firms and franchisees. The accuracy of information is not guaranteed and should be independently verified. The trademarks REALTOR®, REALTORS® and the REALTOR® logo are controlled by The Canadian Real Estate Association (CREA) and identify real estate professionals who are members of CREA. The trademarks MLS®, Multiple Listing Service® and the associated logos are owned by CREA and identify the quality of services provided by real estate professionals who are members of CREA.