



Edmonton Alberta

\$479,800

Fantastic Value in South Edmonton! This spacious, attached double garage duplex boasts nearly 1,500sf of living space above grade plus basement development & a private landscaped yard. Great starter home or investment property! Kitchen has granite counters, full-height cabinetry, ample storage w/ walk-in pantry & a large floating island. Complimenting the kitchen, find a bright dining nook & sizeable living rm w/ feature wall. The primary bedroom offers so much space incl a walk-in closet & sizeable 4pc ensuite. 2 additional bedrooms, tech space, 4pc shared washroom & laundry rm w/ sink & extra walk-in closet space complete this level. Downstairs finished as rec area & unique flex room. Features incl quartz throughout, 30 yr shingles, AC, security cameras & extensive landscaping (concrete work, upper/lower deck & shed). Close to major arteries like Anthony Henday & Calgary Trail. Easy access to shopping complexes, restaurants & nearby schools/daycare. Great community & well-maintained home! (id:6769)

Recreation room 2.43 m X 5.64 m

Living room 2.97 m X 3.45 m

Dining room 2.77 m X 2.17 m

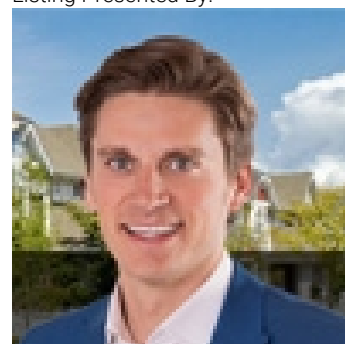
Kitchen 2.77 m X 3.76 m

Primary Bedroom 4.46 m X 3.65 m

Bedroom 2 2.98 m X 2.6 m

Bedroom 3 3.45 m X 2.74 m

Listing Presented By:



Originally Listed by:
RE/MAX Elite

<http://www.alangee.com/>



CREA

DDF

#230, 70 Mcleod Ave , Spruce
Grove, AB,

Phone: 780-920-0550
tyson@royallepage.ca

The property information on this website is derived from the Canadian Real Estate Association's Data Distribution Facility (DDF®). DDF® references real estate listings held by various brokerage firms and franchisees. The accuracy of information is not guaranteed and should be independently verified. The trademarks REALTOR®, REALTORS® and the REALTOR® logo are controlled by The Canadian Real Estate Association (CREA) and identify real estate professionals who are members of CREA. The trademarks MLS®, Multiple Listing Service® and the associated logos are owned by CREA and identify the quality of services provided by real estate professionals who are members of CREA.