



Edmonton Alberta

\$212,500

This charming 2-story home in Brander Gardens offers 1299 SQFT of beautifully maintained living space - NO CARPET and 2 FULL BATHROOMS! The main floor boasts a spacious living room with a cozy gas fireplace and custom mantel, a fully renovated 3-piece bath, and a kitchen equipped with premium Bosch dishwasher and stove. Adjoining the kitchen is a dining room, perfect for hosting or family gatherings. The upper level features three generous bedrooms and a 4-piece bath. Throughout the home, mint-condition hardwood flooring, along with classic moldings and paneling, adds character and warmth. Enjoy central AIR CONDITIONING for year-round comfort - updated FURNACE (2013) and HWT (2019). Private Patio for Summer Evenings with BEAUTIFUL MATURE VINES! Set in sought-after Brander Gardens (Old Riverbend) in SW Edmonton, you'll have easy access to top-rated schools, public transit, the river valley, and major roadways. Ideal for first-time buyers and investors! (id:6769)

Living room 5.37 m X 3.57 m

Dining room 3.6 m X 2.91 m

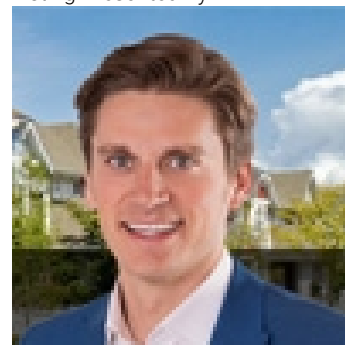
Kitchen 2.24 m X 2.38 m

Primary Bedroom 4.67 m X 3.57 m

Bedroom 2 3.17 m X 2.96 m

Bedroom 3 4.21 m X 2.7 m

Listing Presented By:



Originally Listed by:
RE/MAX Elite

<http://www.riverbendricky.com/>



CREA

DDF

#230, 70 Mcleod Ave , Spruce
Grove, AB,

Phone: 780-920-0550
tyson@royallepage.ca

The property information on this website is derived from the Canadian Real Estate Association's Data Distribution Facility (DDF®). DDF® references real estate listings held by various brokerage firms and franchisees. The accuracy of information is not guaranteed and should be independently verified. The trademarks REALTOR®, REALTORS® and the REALTOR® logo are controlled by The Canadian Real Estate Association (CREA) and identify real estate professionals who are members of CREA. The trademarks MLS®, Multiple Listing Service® and the associated logos are owned by CREA and identify the quality of services provided by real estate professionals who are members of CREA.