



Sherwood Park Alberta

\$464,900

Located in desirable Village on the Lake, this 1450+ sq ft 4 level split is just waiting for new owners to put their personal mark on. The main floor is spacious and consists of a large living room, dining room and kitchen which leads to backyard. The upper level has a huge master suite with a 4 pce ensuite, and a walk in closet. Two more large bedrooms and a 4 pce bath complete the upper floor. The lower level has a large family room, a 4th bedroom and 2 pce bathroom. The basement is finished with a wet bar, and a laundry area. Furnace was replaced approximately 10 years ago. (id:6769)

Primary Bedroom 3.36 m X 3.5 m

Bedroom 2 2.99 m X 3.3 m

Bedroom 3 2.7 m X 3.59 m

Bedroom 5 4.59 m X 5.58 m

Laundry room 4.01 m X 4.15 m

Utility room 0.9 m X 2.89 m

Family room 5.75 m X 4.19 m

Bedroom 4 3.26 m X 4.19 m

Storage 2.39 m X 0.9 m

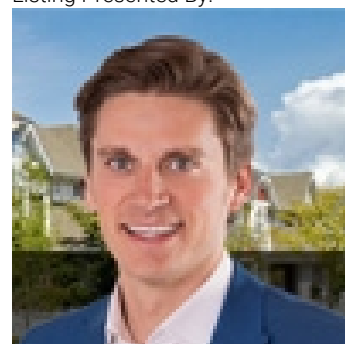
Living room 3.96 m X 5.37 m

Dining room 3.13 m X 2.74 m

Kitchen 3.19 m X 3.58 m

Breakfast 1.68 m X 3.63 m

Listing Presented By:



Originally Listed by:
Royal LePage Prestige Realty



Royal
Le Page Noralta Spruce Grove

#230, 70 Mcleod Ave , Spruce
Grove, AB,

Phone: 780-920-0550

Fax:

tyson@royalpage.ca

The property information on this website is derived from the Canadian Real Estate Association's Data Distribution Facility (DDF®). DDF® references real estate listings held by various brokerage firms and franchisees. The accuracy of information is not guaranteed and should be independently verified. The trademarks REALTOR®, REALTORS® and the REALTOR® logo are controlled by The Canadian Real Estate Association (CREA) and identify real estate professionals who are members of CREA. The trademarks MLS®, Multiple Listing Service® and the associated logos are owned by CREA and identify the quality of services provided by real estate professionals who are members of CREA.