



Rural Parkland County Alberta

\$350,000

A Weekend Getaway, or a 4-Seasons Peaceful Lifestyle!! This 2-bed park model backs the trees in the Pineridge Golf Course & RV Resort. A bright, sunny kitchen offers an island and tons of cabinets, and huge windows give the living room a beautiful view. Custom cabinets provide the primary with extra storage, and the 2nd bed has bunk beds and a large wardrobe. ALL OF THE FURNITURE IS INCLUDED! The 3-pc bath has a large walk-in shower. Two rooms in the double garage create an opportunity for future bedrooms, a summer kitchen, or to store your toys. A large deck, a gazebo, a fire pit and central air ensure you enjoy every minute. There is so much to do in this gated community! Enjoy the clubhouse, pickleball and basketball courts, playground and trails, Wi-Fi, 50 amp power, full service septic, shower/washroom and laundry facilities, and the 12 hole Pineridge Golf Course. Just a short walk to Wabamun lake, and Seba Beach is minutes away. Trade in your RV for a year-round paradise! 45 min West of Edmonton. (id:6769)

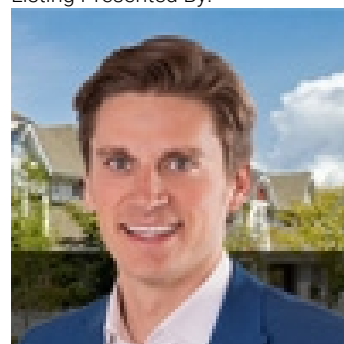
Living room 2.52 m X 3.89 m

Kitchen 3.36 m X 3.89 m

Primary Bedroom 3.47 m X 2.27 m

Bedroom 2 1.93 m X 2.25 m

Listing Presented By:



Originally Listed by:
RE/MAX Elite

<http://www.thegabouryteam.com/>



Royal

Le Page Noralta Spruce Grove

#230, 70 Mcleod Ave , Spruce Grove, AB,

Phone: 780-920-0550

Fax:

tyson@royallepage.ca

The property information on this website is derived from the Canadian Real Estate Association's Data Distribution Facility (DDF®). DDF® references real estate listings held by various brokerage firms and franchisees. The accuracy of information is not guaranteed and should be independently verified. The trademarks REALTOR®, REALTORS® and the REALTOR® logo are controlled by The Canadian Real Estate Association (CREA) and identify real estate professionals who are members of CREA. The trademarks MLS®, Multiple Listing Service® and the associated logos are owned by CREA and identify the quality of services provided by real estate professionals who are members of CREA.