



## Edmonton Alberta

\$478,000

Well maintained two storey with new double detached garage! Main floor features spacious living room with 9 foot ceilings, fireplace and south east facing windows. The dining area is sizable- able to accommodate larger tables. The kitchen offers an island counter and newer dishwasher. There is ample cabinets and counter space plus pantry. A 2 pce bath is just off the mudroom and back entry. Main floor laundry. The stairway leading to the lower level has new carpet and the basement is ready for future development. The upper level features 3 bedrooms including the primary bedroom with walk in closet and a 4 piece ensuite. There is an additional 4 piece bath on the upper level. New carpet throughout the whole upper level. Excellent location only steps from the Allard park, playground and a K to 9 School. Fully fenced yard. Ready for your family! (id:6769)

Living room 4.1 m X 3.8 m

Dining room 4.1 m X 3.1 m

Kitchen 4.1 m X 3.3 m

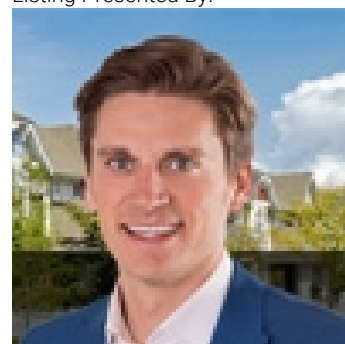
Laundry room Measurements not available

Primary Bedroom 4.1 m X 3.9 m

Bedroom 2 3.8 m X 2.7 m

Bedroom 3 3.6 m X 2.8 m

Listing Presented By:



Originally Listed by:  
RE/MAX Elite

<http://www.calldale4asale.com/>



**Royal**

**Le Page Noralta Spruce Grove**

#230, 70 Mcleod Ave , Spruce Grove, AB,

Phone: 780-920-0550

Fax:

tyson@royallepage.ca

The property information on this website is derived from the Canadian Real Estate Association's Data Distribution Facility (DDF®). DDF® references real estate listings held by various brokerage firms and franchisees. The accuracy of information is not guaranteed and should be independently verified. The trademarks REALTOR®, REALTORS® and the REALTOR® logo are controlled by The Canadian Real Estate Association (CREA) and identify real estate professionals who are members of CREA. The trademarks MLS®, Multiple Listing Service® and the associated logos are owned by CREA and identify the quality of services provided by real estate professionals who are members of CREA.