



## Edmonton Alberta

\$368,800

Value and convenience in a modern SW townhome! Welcome to Graydon Hill, surrounded by nearby ravine/green space, parks/ponds, amenities such as restaurants/retail/golf & easy access to major amenities/transit! Fantastic 3-bedroom floorplan with spacious primary suite, including 3pc ensuite, 2 additional bedrooms & shared 4pc bathroom. Inviting main level boasts large windows and plenty of natural light. Modern kitchen with stainless steel appliances, white shaker cabinets, quartz counters & walk-in pantry! Living room offers access to private balcony too (no shared balcony on this unit!). Additional features include double attached garage, large storage area & quartz counters throughout. Enjoy walking trails throughout the community and a nature reserve just a block away! Edmonton International Airport close by too! A must see! (id:6769)

Mud room Measurements not available

Storage Measurements not available

Living room 4.74 m X 3.58 m

Dining room 2.65 m X 2.29 m

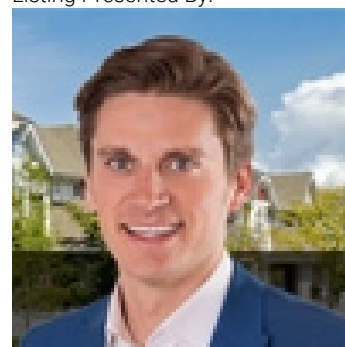
Kitchen 2.86 m X 3.23 m

Primary Bedroom 4.16 m X 3.48 m

Bedroom 2 2.89 m X 2.48 m

Bedroom 3 3 m X 2.82 m

Listing Presented By:



Originally Listed by:  
RE/MAX Elite

<http://www.alangee.com/>



**Royal**

**Le Page Noralta Spruce Grove**

#230, 70 Mcleod Ave , Spruce  
Grove, AB,

Phone: 780-920-0550

Fax:

[tyson@royallepage.ca](mailto:tyson@royallepage.ca)

The property information on this website is derived from the Canadian Real Estate Association's Data Distribution Facility (DDF®). DDF® references real estate listings held by various brokerage firms and franchisees. The accuracy of information is not guaranteed and should be independently verified. The trademarks REALTOR®, REALTORS® and the REALTOR® logo are controlled by The Canadian Real Estate Association (CREA) and identify real estate professionals who are members of CREA. The trademarks MLS®, Multiple Listing Service® and the associated logos are owned by CREA and identify the quality of services provided by real estate professionals who are members of CREA.