



## Edmonton Alberta

\$813,800

One of Edmonton's Top Builders since 1930, Fekete Homes presents this beautiful custom built 2 Sty in the Arbours of Keswick. Sleek transitional finishes in contemporary color tones. Open concept plan is perfect for those who love to entertain. Meticulously finished w/true care & craftsmanship. Oversized windows maximizes the natural light in all of the spacious rooms & 9 ft ceilings give an added airiness. Dream Chef's kitchen w/walk thru pantry. Large island overlooking the GR w/a linear FP & dining area. Main flr den/bedrm w/4 pc bath. Metal railing, luxury vinyl plank flrs, S/S appliances & upgraded 2 toned cabinetry w/quartz counters. 3 large bedrms upstairs, 5 pc bath, laundry rm w/cabinetry/sink, massive bonus rm w/door to reduce sound transfer. Spa like 6 pc ensuite w/tiled O/S shower w/10 mil glass. 26' wide South facing deck w/glass railing. 24X25 garage w/drain, R/I for heater. 2 staged furnace, triple windows & EnerGuide efficient rating. Steps to park/ponds, trails, K-9 school, shops (id:6769)

Living room 3.28 m X 4.42 m

Dining room 3.94 m X 3.12 m

Kitchen 4.4 m X 4.2 m

Den 3.19 m X 3.04 m

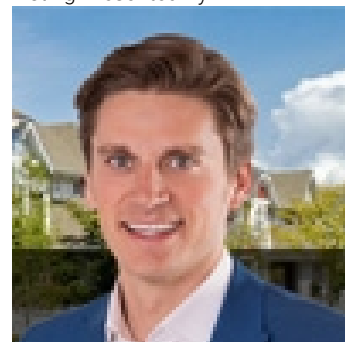
Primary Bedroom 3.92 m X 4.61 m

Bedroom 2 3.24 m X 4 m

Bedroom 3 3.22 m X 3.2 m

Bonus Room 5.16 m X 4.76 m

Listing Presented By:



Originally Listed by:  
RE/MAX Elite

<http://www.alangee.com/>



**Royal**

**Le Page Noralta Spruce Grove**

#230, 70 Mcleod Ave , Spruce Grove, AB,

Phone: 780-920-0550

Fax:

[tyson@royallepage.ca](mailto:tyson@royallepage.ca)

The property information on this website is derived from the Canadian Real Estate Association's Data Distribution Facility (DDF®). DDF® references real estate listings held by various brokerage firms and franchisees. The accuracy of information is not guaranteed and should be independently verified. The trademarks REALTOR®, REALTORS® and the REALTOR® logo are controlled by The Canadian Real Estate Association (CREA) and identify real estate professionals who are members of CREA. The trademarks MLS®, Multiple Listing Service® and the associated logos are owned by CREA and identify the quality of services provided by real estate professionals who are members of CREA.