



Edmonton Alberta

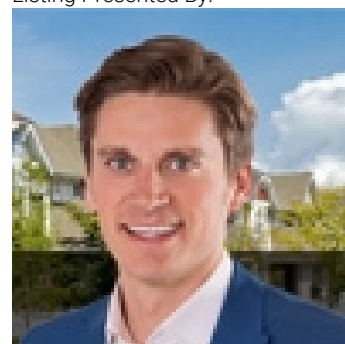
\$2,218,800

INCREDIBLE ONCE-IN-A-LIFETIME OPPORTUNITY to own nearly 1/2 AN ACRE in a mature & established SW neighborhood. This stunning property boasts over 6,200sf ABOVE GRADE w/ 8,500+sf TTL LIVING SPACE. Rear south exposure enhances the bright living room w/ soaring windows & a vaulted ceiling. Kitchen has top-of-the-line appliances & cabinetry plus numerous prep areas. Upstairs find widened stairwells/hallways & 4 generous bdrms w/ built-in desks, walk-in closets & private bthrms. Primary suite is a dream w/ spa-like ensuite, huge closet & balcony. Entertain downstairs w/ lrg rec space, wet bar, theatre rm, gym, 5th bdrm & flex rm. Extra space w/ upper loft/exercise studio, main flr craft/flex rm & 2nd flr office w/ a view. Enjoy a private treed yard bursting w/ perennials & boasting a H2O feature, numerous seating areas & access to walking trail (Ester Starkman & William Irwin Elementary in view). And for car lovers, enjoy an o/s 5 car bay w/ room for a lift, work bench, full car wash bay & storage galore. (id:6769)

Bedroom 5 4.2 m X 4 m
 Recreation room 6.6 m X 4.6 m
 Media 4.26 m X 9 m
 Living room 6.28 m X 6.27 m
 Dining room 4.87 m X 4.45 m
 Kitchen 7.3 m X 4.9 m
 Family room 4.44 m X 5.18 m

Den 4.2 m X 4.87 m
 Primary Bedroom 7.6 m X 9.1 m
 Bedroom 2 4.2 m X 4.9 m
 Bedroom 3 5.18 m X 3.96 m
 Bedroom 4 6.7 m X 4.9 m
 Bonus Room 3.35 m X 4.85 m

Listing Presented By:



Originally Listed by:
 RE/MAX Elite

<http://www.alangee.com/>



CREA

DDF

#230, 70 Mcleod Ave , Spruce Grove, AB,

Phone: 780-920-0550
 tyson@royallepage.ca

The property information on this website is derived from the Canadian Real Estate Association's Data Distribution Facility (DDF®). DDF® references real estate listings held by various brokerage firms and franchisees. The accuracy of information is not guaranteed and should be independently verified. The trademarks REALTOR®, REALTORS® and the REALTOR® logo are controlled by The Canadian Real Estate Association (CREA) and identify real estate professionals who are members of CREA. The trademarks MLS®, Multiple Listing Service® and the associated logos are owned by CREA and identify the quality of services provided by real estate professionals who are members of CREA.