



St. Albert Alberta

\$649,900

Welcome home to Erin Ridge North, one of St Albert's most desirable communities, close to amenities, shopping & parks. This custom built 2131 sqft home has been meticulously designed & crafted. The main floor has an open to above entry, mud room w built in bench, main floor Den, walk through pantry & open concept kitchen, beautiful living room w huge windows and electric Fireplace. The gourmet kitchen has ample cabinets, gorgeous quartz counters w waterfall & top of the line appliances, including gas cooktop, built-in oven & microwave. The second floor houses the Owner's Suite w recessed ceiling, walk-in closet & luxurious Ensuite w double sinks, glass shower & freestanding tub. There are 2 more generous bedrooms, one with walk-in closet, full bath, convenient Second Floor Laundry & Bonus Room (could be used as 4th Bedroom). Complete with 24x21 double attached garage with EV CHARGER, DECK, LUXURY VINYL PLANK FLOORS THROUGHOUT and ready for IMMEDIATE POSSESSION. Come make this home yours. (id:6769)

Living room 4.43 3.96

Dining room 6.85 3.18

Kitchen 6.85 3.18

Family room 4.43 3.96

Den 3.14 2.73

Mud room 2.56 1.78

Pantry 1.67 1.66

Primary Bedroom 4.36 4.27

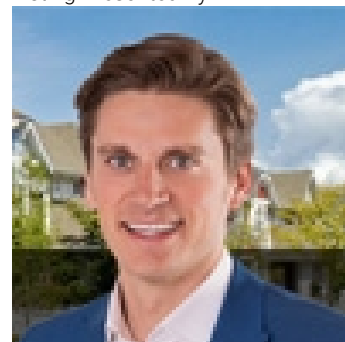
Bedroom 2 3.33 2.72

Bedroom 3 3.03 2.98

Bonus Room 4.56 3.81

Laundry room 1.89 1.20

Listing Presented By:



Originally Listed by:
RE/MAX Elite

<https://www.victoriarempel.ca/>



CREA

DDF

#230, 70 Mcleod Ave , Spruce
Grove, AB,

Phone: 780-920-0550
tyson@royallepage.ca

The property information on this website is derived from the Canadian Real Estate Association's Data Distribution Facility (DDF®). DDF® references real estate listings held by various brokerage firms and franchisees. The accuracy of information is not guaranteed and should be independently verified. The trademarks REALTOR®, REALTORS® and the REALTOR® logo are controlled by The Canadian Real Estate Association (CREA) and identify real estate professionals who are members of CREA. The trademarks MLS®, Multiple Listing Service® and the associated logos are owned by CREA and identify the quality of services provided by real estate professionals who are members of CREA.