



Edmonton Alberta

\$1,238,800

Beautifully crafted 4400 sf (ttl) Birkholz custom home, where elegance meets exceptional design. Meticulously maintained by the original owner. High quality materials were carefully selected incl plywood sheathing, exotic eucalyptus hardwood, solid core doors, many built ins, O/S triple paned windows w/custom Hunter Douglas blinds. Unique living rm features in-floor trees to an open 18' vaulted ceiling seamlessly blending nature with architecture. Gorgeous Chef's kitchen w/full height solid maple cabinets, U/C lighting, granite counters & newer S/S appliances. Main floor den. Retreat to the luxurious primary bedrm that boasts a FP & spa-like ensuite w/a 10 mm glass shower & jetted corner tub. Generous sized bedrms, vaulted fully wired bonus rm & a library loft. The F/Fin bsmt is built for entertainment & relaxation, complete w/wet bar which integrates a stunning salt water aquarium, rec rm (upg cork flrs) & an equipped fitness rm. O/S TRIPLE garage. Huge private yard backs to a treed park & steps to pond (id:6769)

Family room 6 m X 4.48 m

Laundry room 5.43 m X 2.18 m

Recreation room 6 m X 4.11 m

Living room 6.05 m X 4.63 m

Dining room 3.94 m X 3.76 m

Kitchen 5.3 m X 4.57 m

Den 4.73 m X 3.09 m

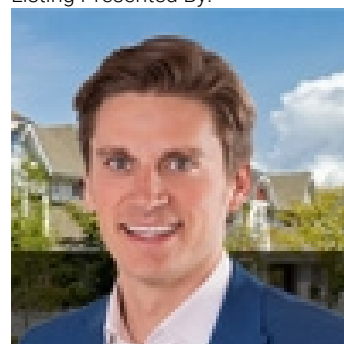
Primary Bedroom 4.02 m X 5.08 m

Bedroom 2 4 m X 3.85 m

Bedroom 3 3.95 m X 3.88 m

Bonus Room 5.34 m X 5 m

Listing Presented By:



Originally Listed by:
RE/MAX Elite

<http://www.alangee.com/>



Royal

Le Page Noralta Spruce Grove

#230, 70 Mcleod Ave , Spruce Grove, AB,

Phone: 780-920-0550

Fax:

tyson@royallepage.ca

The property information on this website is derived from the Canadian Real Estate Association's Data Distribution Facility (DDF®). DDF® references real estate listings held by various brokerage firms and franchisees. The accuracy of information is not guaranteed and should be independently verified. The trademarks REALTOR®, REALTORS® and the REALTOR® logo are controlled by The Canadian Real Estate Association (CREA) and identify real estate professionals who are members of CREA. The trademarks MLS®, Multiple Listing Service® and the associated logos are owned by CREA and identify the quality of services provided by real estate professionals who are members of CREA.