

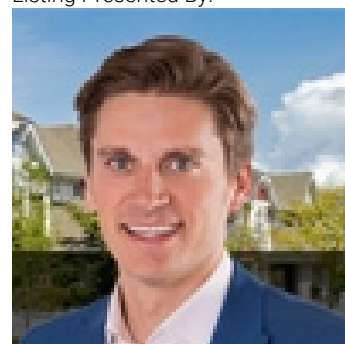


Fort Saskatchewan Alberta

\$309,000

Build your dream home on this excellent building spot in the community of Southfort Estates, Fort Saskatchewan. This west facing lot is , 1525 square meters, 16,414 square feet. 23.7 meters wide and 60 meters long. The chain link fence at the back of the property opens onto a treed walking path. All services at property line. Lot will accommodate a building pocket of about 58'. Close to schools, playground, sports fields, shopping centers, transit station, and the Dow Recreation Centre (id:6769)

Listing Presented By:



Originally Listed by:
RE/MAX Real Estate

<http://www.tomlowe.ca/>



CREA

DDF

#230, 70 Mcleod Ave , Spruce Grove, AB,

Phone: 780-920-0550
tyson@royallepage.ca

The property information on this website is derived from the Canadian Real Estate Association's Data Distribution Facility (DDF®). DDF® references real estate listings held by various brokerage firms and franchisees. The accuracy of information is not guaranteed and should be independently verified. The trademarks REALTOR®, REALTORS® and the REALTOR® logo are controlled by The Canadian Real Estate Association (CREA) and identify real estate professionals who are members of CREA. The trademarks MLS®, Multiple Listing Service® and the associated logos are owned by CREA and identify the quality of services provided by real estate professionals who are members of CREA.