



Edmonton Alberta

\$430,800

Beautiful 2 storey half duplex that BACKS ONTO WALKING PATH! Located in the middle of a quiet keyhole in the desirable South Terwillegar neighborhood. Built by Landmark, this home features an open concept main lvl w/ vinyl plank floors. Cozy living rm has large window overlooking the HUGE SOUTH FACING YARD w/ access to your deck. Kitchen features quartz countertops, S/S appliances, ceiling high cabinetry, subway tile backsplash & lrg island w/ eating bar. Upstairs you'll find a spacious primary bedrm w/ 3 pc ensuite incl an oversized shower & walk-in closet. 4 pc main bath, laundry & 2 other well-sized bedrms complete this lvl. Generous amt of storage in the bsmnt w/ plumbing rough-ins & awaits development. Single attached garage, K2 stonework, fully landscaped large fenced lot & visitor parking. Quick access to major commuter routes incl Rabbit Hill Rd & Anthony Henday. Walking distance to parks & walking trails! Conveniently close to schools, grocery, restaurants, shops, Terwillegar Rec Centre, & more! (id:6769)

Living room 3.31 m X 4.4 m

Kitchen 2.82 m X 3.08 m

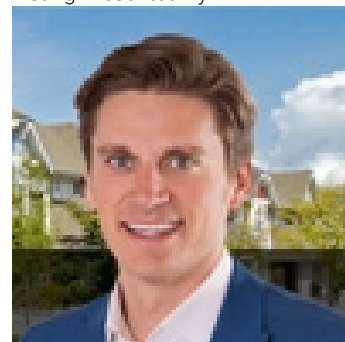
Breakfast 2.82 m X 2.73 m

Primary Bedroom 3.38 m X 4.38 m

Bedroom 2 2.95 m X 3.97 m

Bedroom 3 2.75 m X 3.32 m

Listing Presented By:



Originally Listed by:
RE/MAX Elite

<http://www.alangee.com/>



**Royal
Le Page Noralta Spruce Grove**

#230, 70 Mcleod Ave , Spruce
Grove, AB,

Phone: 780-920-0550
Fax:
tyson@royallepage.ca

The property information on this website is derived from the Canadian Real Estate Association's Data Distribution Facility (DDF®). DDF® references real estate listings held by various brokerage firms and franchisees. The accuracy of information is not guaranteed and should be independently verified. The trademarks REALTOR®, REALTORS® and the REALTOR® logo are controlled by The Canadian Real Estate Association (CREA) and identify real estate professionals who are members of CREA. The trademarks MLS®, Multiple Listing Service® and the associated logos are owned by CREA and identify the quality of services provided by real estate professionals who are members of CREA.