



Fort Saskatchewan Alberta

\$319,900

Hey Fort Sask Buyers! Have you been Watching and Waiting for a Wonderful deal in West Park? Well look no further! We submit to you our latest listing on Elm Street (Don't worry, it's NOT a nightmare, lol. Quite the opposite in fact!) Recently cleaned. Ready to move in. Last tenants left some love marks; perhaps grab a paint brush for some touch-ups? Otherwise, it's good to go! Your new home features not two but THREE bedrooms + 2.5 baths. Primary Bdrm boasts walk-in closet + private ensuite (away from prying fingers!) Convenient attached garage keeps your minivan out of the snow. Unlike other similar offerings, this home boasts large fully-fenced yard Aaand...BONUS: You back a picturesque walking path! Kids/fury buddies play safe and you can keep watch from inside. OTHER BONUS: a BONUS ROOM! Best bonus? NO Condo fees! (id:6769)

Laundry room Measurements not available

Living room Measurements not available

Dining room Measurements not available

Kitchen Measurements not available

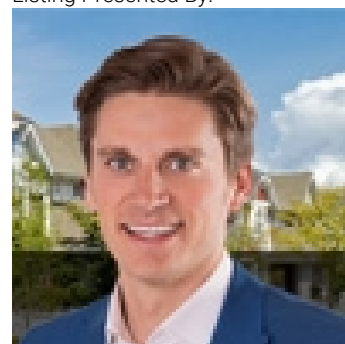
Primary Bedroom Measurements not available

Bedroom 2 Measurements not available

Bedroom 3 Measurements not available

Bonus Room Measurements not available

Listing Presented By:



Originally Listed by:
MaxWell Challenge Realty



CREA

DDF

#230, 70 Mcleod Ave , Spruce
Grove, AB,

Phone: 780-920-0550
tyson@royallepage.ca

The property information on this website is derived from the Canadian Real Estate Association's Data Distribution Facility (DDF®). DDF® references real estate listings held by various brokerage firms and franchisees. The accuracy of information is not guaranteed and should be independently verified. The trademarks REALTOR®, REALTORS® and the REALTOR® logo are controlled by The Canadian Real Estate Association (CREA) and identify real estate professionals who are members of CREA. The trademarks MLS®, Multiple Listing Service® and the associated logos are owned by CREA and identify the quality of services provided by real estate professionals who are members of CREA.