



Edmonton Alberta

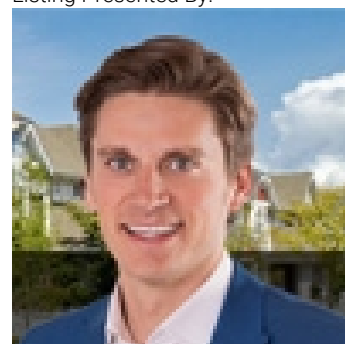
\$1,998,800

STUNNING BRAND NEW contemporary home backing SOUTH to a beautiful RAVINE. Unique with no pathway behind for added privacy. Custom 3733 sf 4 bedrm 2 sty features 20', 10' & 9' ceilings, Massive windows, horizontal black metal railing, unique modern black LED fixtures, designer tiles & Engineered wide plank H/W. This home makes an emphatic statement yet is practical for every day family living. The Chef's kitchen features sleek matt Grey cabinetry & upgraded quartz counters. Fisher Paykel appliances -O/S fridge/freezer & a gas cooktop. Main flr den. 4 upper bedrms upstairs all w/ensuites. Primary suite w/RAVINE views, 2 sided FP, dream ensuite & massive W/I closet w/island, massive covered balcony & access to the laundry rm. Large custom window wells =extra light in the F/FIN BSMT w/2 bedrms, full bath, rec rm w/wetbar & exercise rm. 42X23.5' TRIPLE heated garage w/drains can accommodate car lifts. K2 Stone, acrylic stucco & long board accents. ENERGY EFFICIENT. A/C. Steps to K-9 school,park/pond & trails (id:6769)

Family room 4.61 m X 6.25 m
 Bedroom 5 3.03 m X 3.64 m
 Bedroom 6 3.03 m X 3.79 m
 Living room 5.09 m X 5.67 m
 Dining room 5.16 m X 3.54 m
 Kitchen 5.39 m X 4.29 m
 Den 4.21 m X 2.83 m

Primary Bedroom 5.17 m X 3.55 m
 Bedroom 2 3.47 m X 3.87 m
 Bedroom 3 3.53 m X 3.45 m
 Bedroom 4 4.37 m X 3.4 m
 Bonus Room 4.92 m X 5.12 m
 Laundry room 3.23 m X 1.8 m

Listing Presented By:



Originally Listed by:
 RE/MAX Elite

<http://www.alangee.com/>



Royal

Le Page Noralta Spruce Grove

#230, 70 Mcleod Ave , Spruce Grove, AB,

Phone: 780-920-0550
 Fax:
 tyson@royalpage.ca

The property information on this website is derived from the Canadian Real Estate Association's Data Distribution Facility (DDF®). DDF® references real estate listings held by various brokerage firms and franchisees. The accuracy of information is not guaranteed and should be independently verified. The trademarks REALTOR®, REALTORS® and the REALTOR® logo are controlled by The Canadian Real Estate Association (CREA) and identify real estate professionals who are members of CREA. The trademarks MLS®, Multiple Listing Service® and the associated logos are owned by CREA and identify the quality of services provided by real estate professionals who are members of CREA.